

Examples: Version 9.2

This is a collection of diagrams the author has had occasion to produce using m4 circuit macros and others, and gpic or dpic. In some cases there are other or better m4 or pic constructs for producing the same drawings, but the source-file names are shown for reference. Most of the examples can be processed using either dpic -p, dpic -g, or gpic -t, but the possibility of other postprocessing has meant that sometimes the source is slightly more complicated than it would be if only one workflow had been assumed. The most simplicity and elegance is achieved by sticking to one pic interpreter and one postprocessor.

A few of these examples are also found in the manual Circuit_macros.pdf. There are other examples in the examples directory that are not included in this document. To process *file.m4*, type, for example, "make *file.pdf*."

A few of the examples following the circuits test some of the boundaries of what macros and the pic language can do.

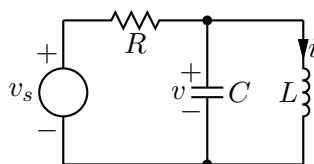


Figure 1: The quick-start example from the manual [quick.m4].

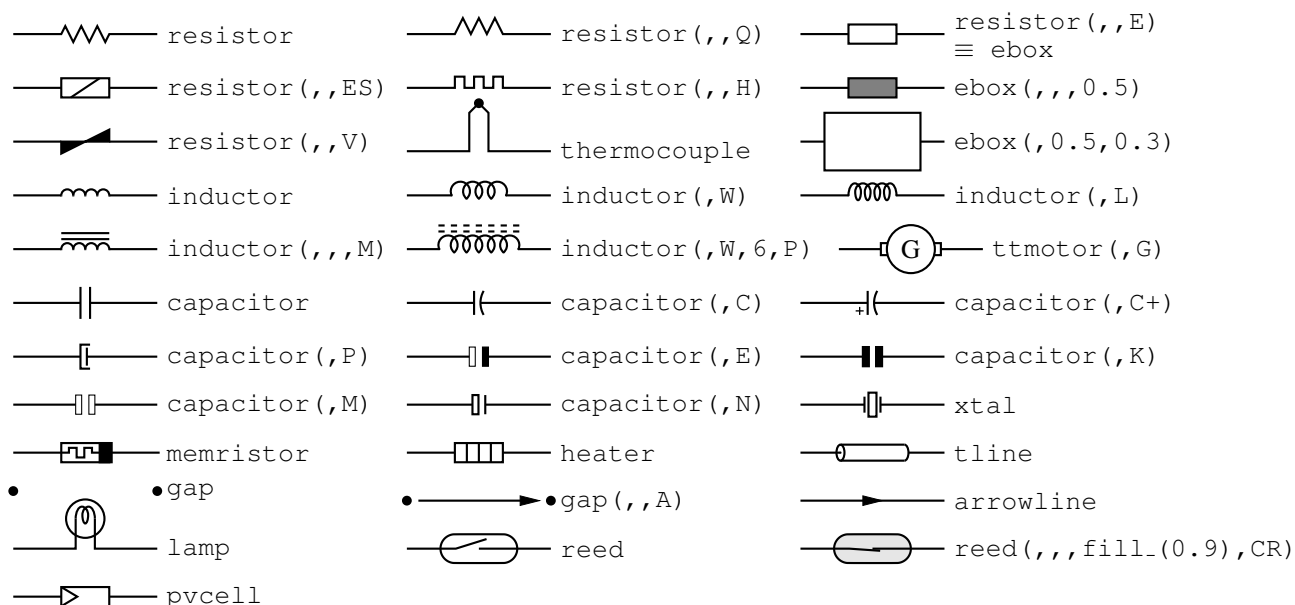


Figure 2: Two-terminal elements, showing some variations [CctTable.m4].

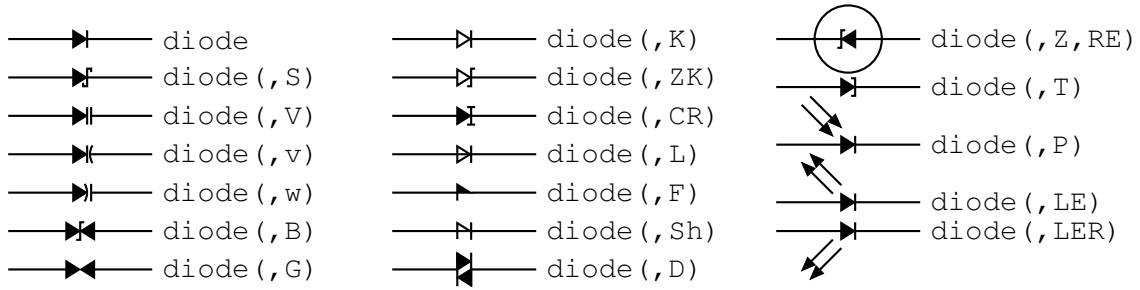


Figure 3: Diodes: a K in the second argument draws an open arrowhead [Diodes.m4].

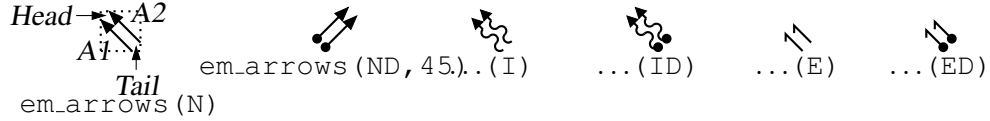


Figure 4: Radiation arrows [Emarrows.m4].

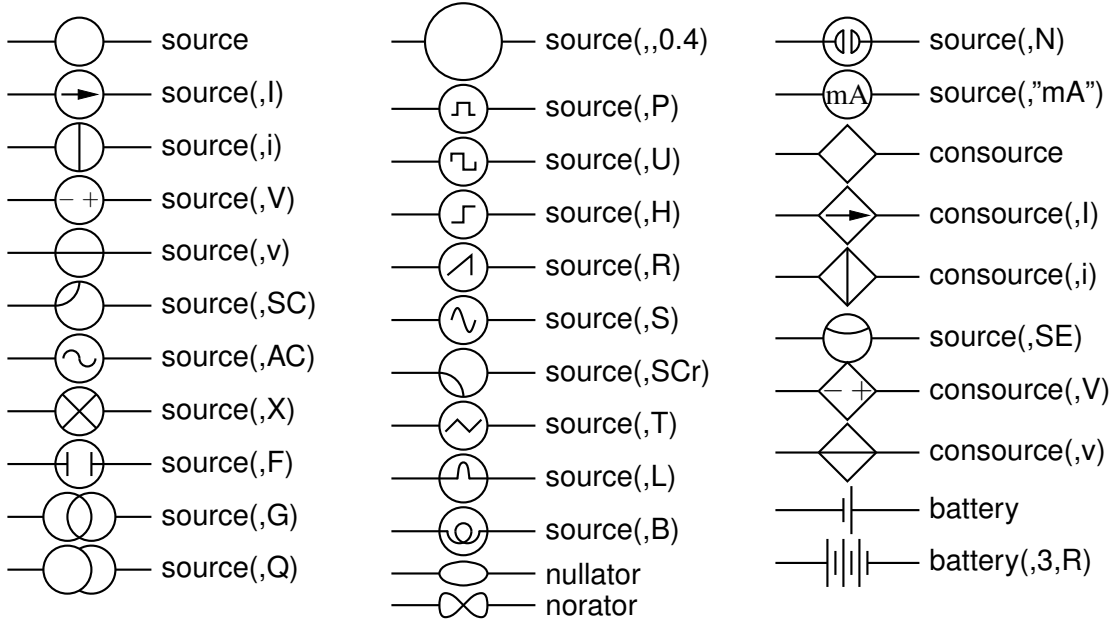


Figure 5: Sources and source-like elements [Sources.m4].

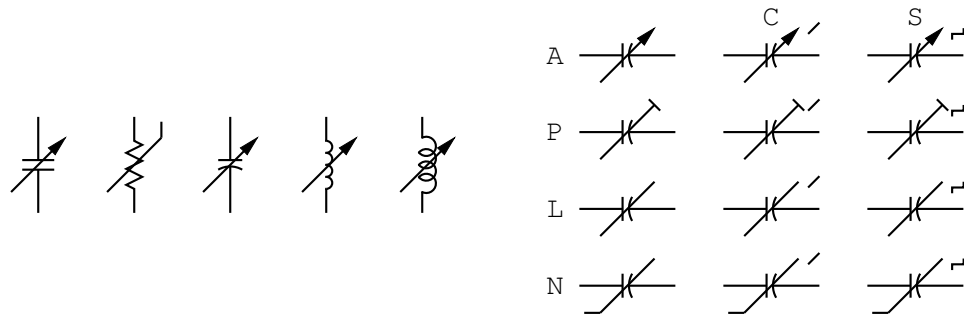


Figure 6: Arrows and marks indicating variability [Variable.m4].

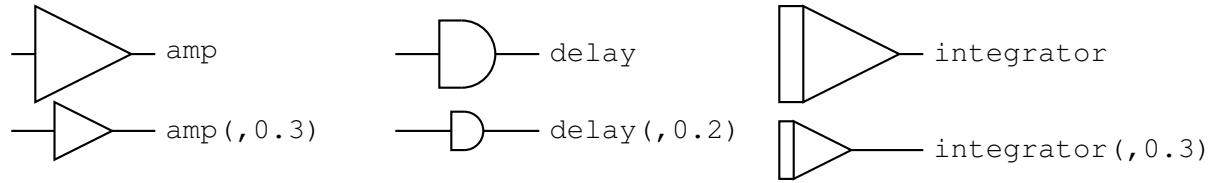


Figure 7: Macros amp, delay, and integrator [AmpTable.m4].

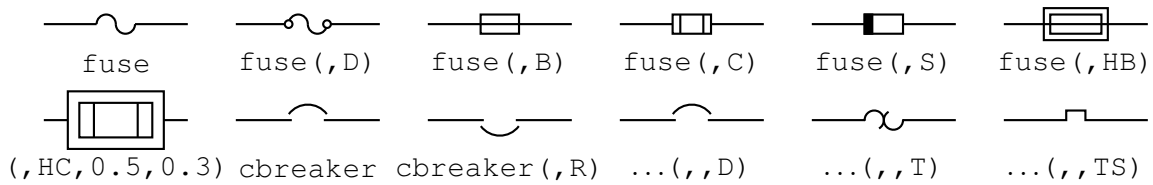


Figure 8: Macros fuse and cbreaker [Fuses.m4].

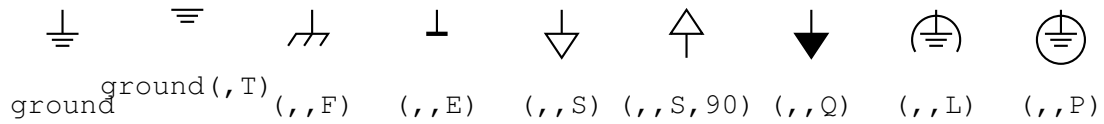


Figure 9: Ground symbols [Grounds.m4].

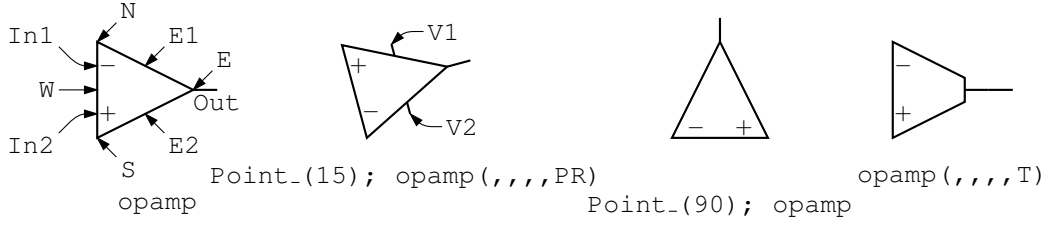


Figure 13: The opamp [Opamp.m4].

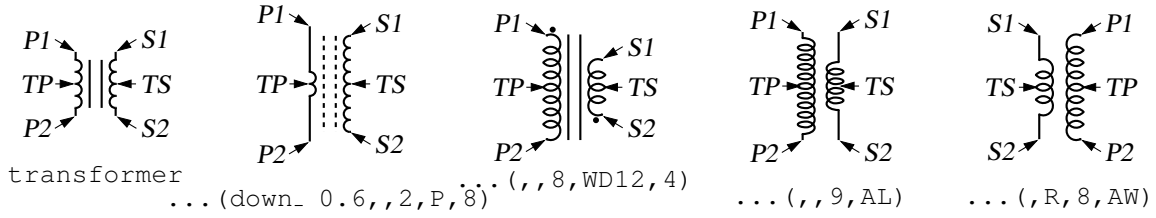


Figure 14: The transformer element, drawing direction down [Xform.m4].

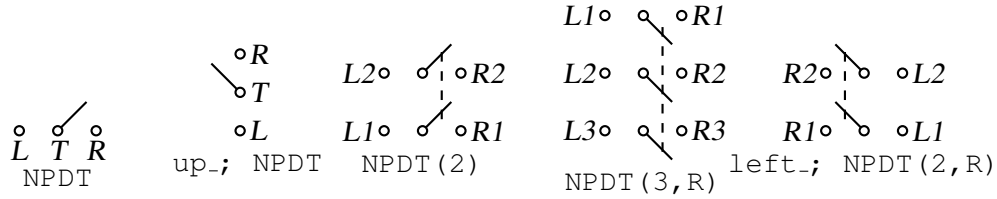


Figure 15: Double throw with the NPDT macro [NPDT.m4].

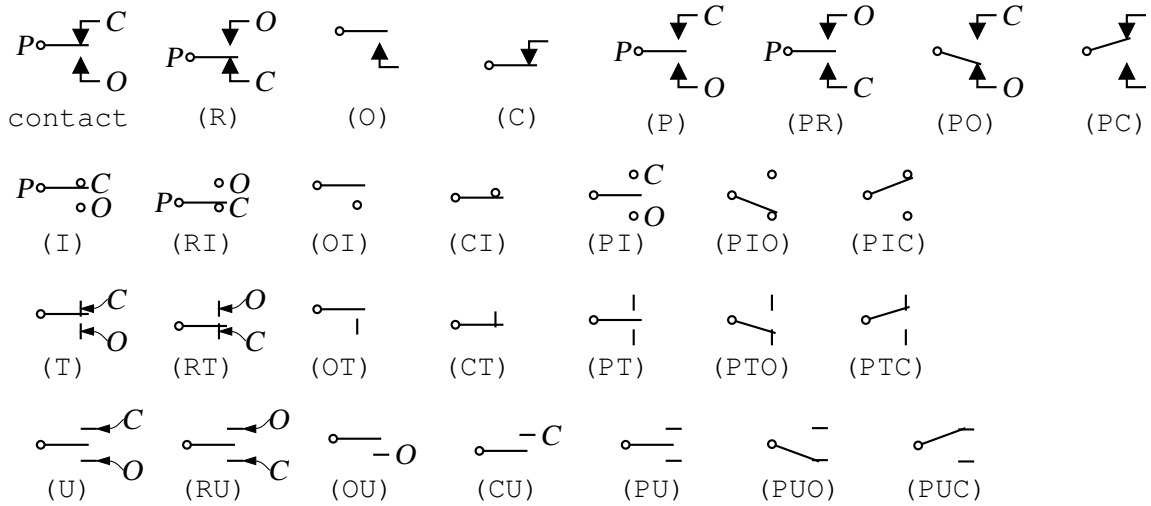


Figure 16: A non-exhaustive sampling of contact macro variations [Contact.m4].

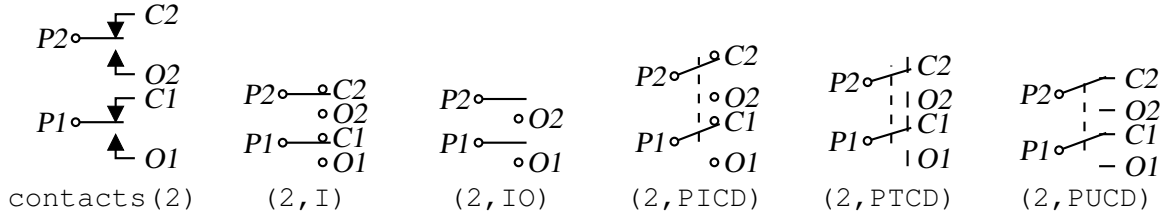


Figure 17: The contacts macro [Contacts.m4].

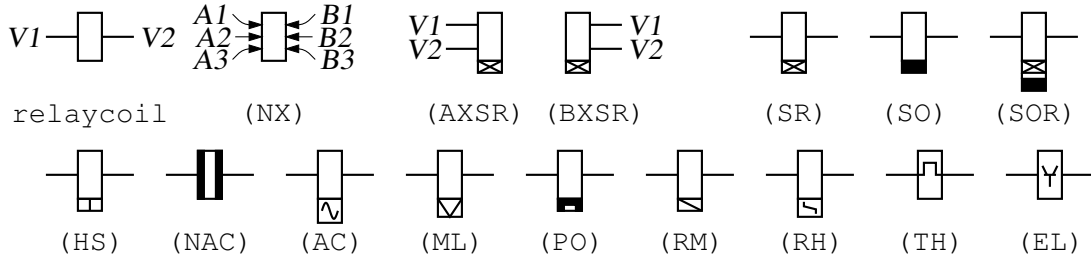


Figure 18: The relaycoil macro [relaycoil.m4].

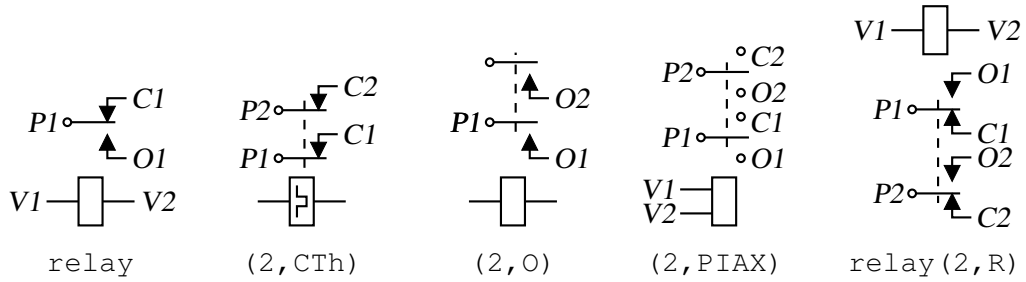


Figure 19: Some variants of the relay macro [Relay.m4].

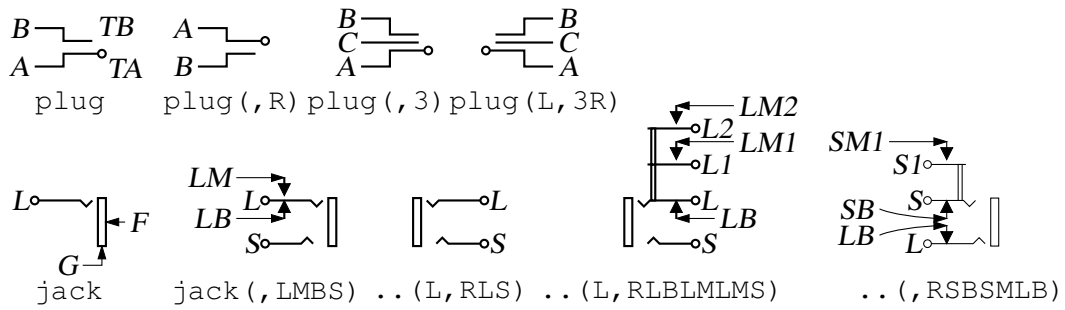


Figure 20: The jack and plug macros [Jack.m4].

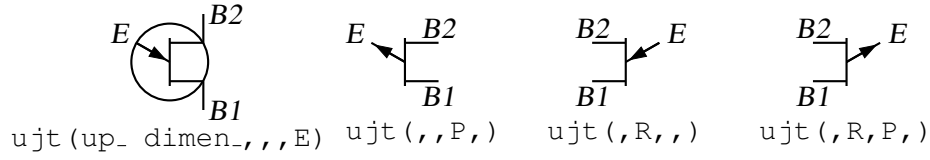


Figure 25: UJT examples [ujt.m4].

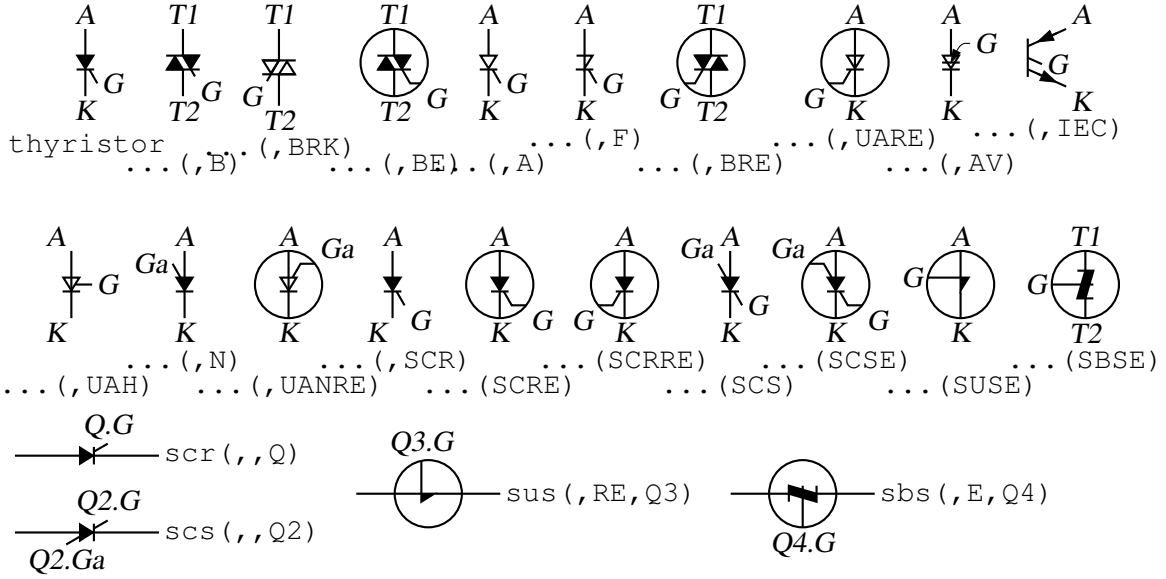


Figure 26: Thyristor examples [thyristor.m4].

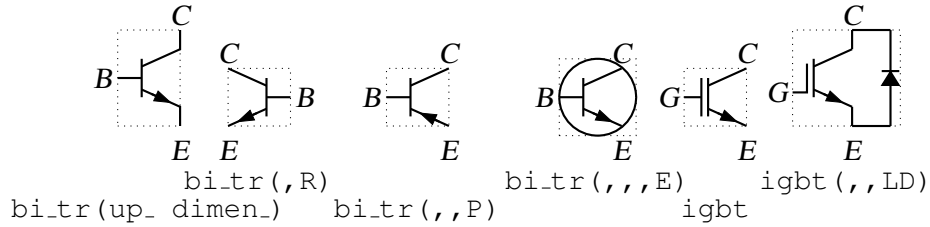


Figure 27: Bipolar transistors (drawing direction: up) [Bip.m4].

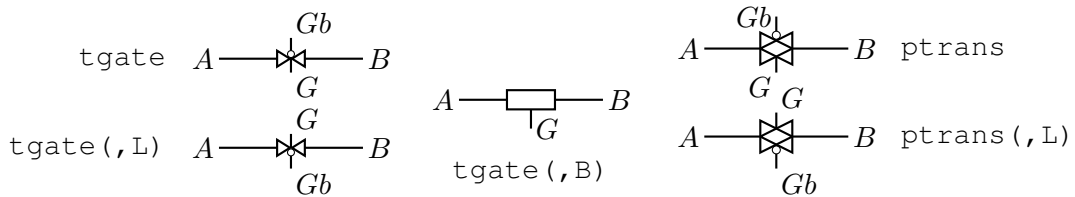


Figure 28: The tgate and ptrans elements [Tgate.m4].

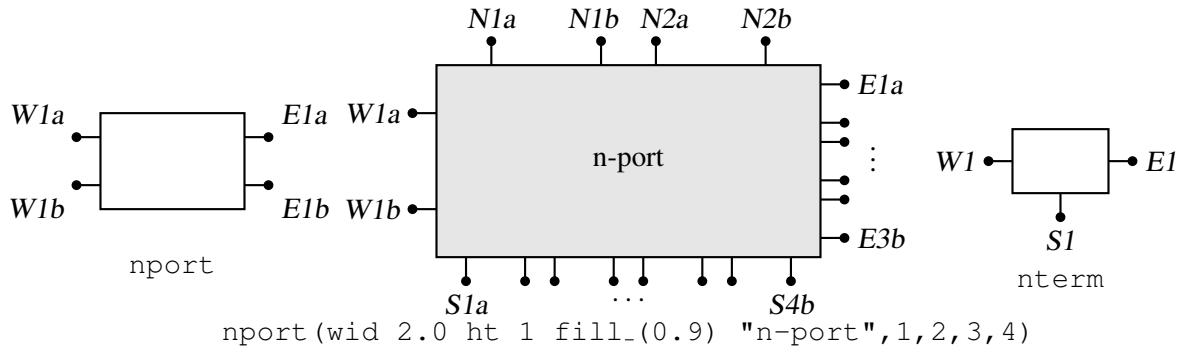


Figure 29: The nport and nterm macros [Nport.m4].

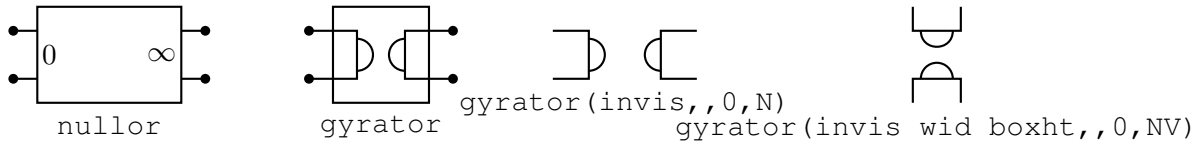


Figure 30: Some customizations of nport [NLG.m4].

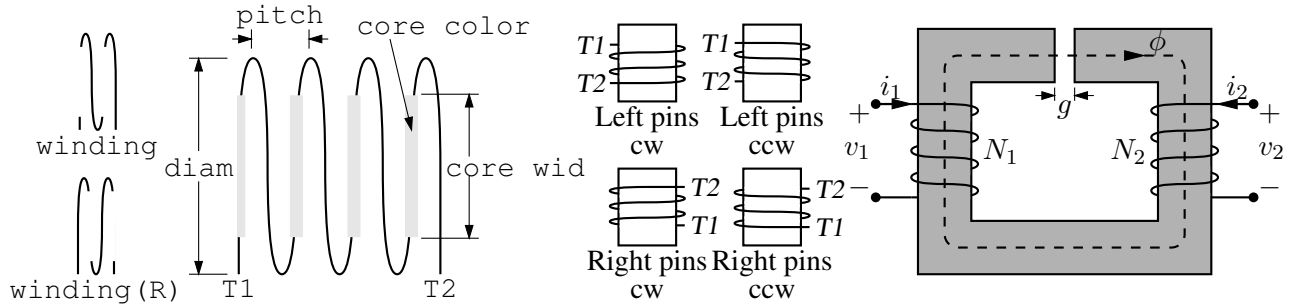


Figure 31: The macro winding (L|R,diam,pitch,turns,core wid,core color) [Windings.m4].

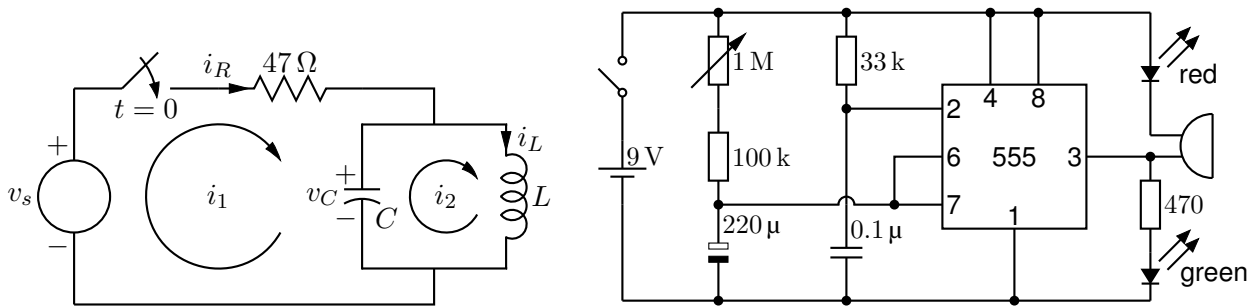


Figure 32: Two simple labeled circuits [ex01.m4] [Timer.m4].

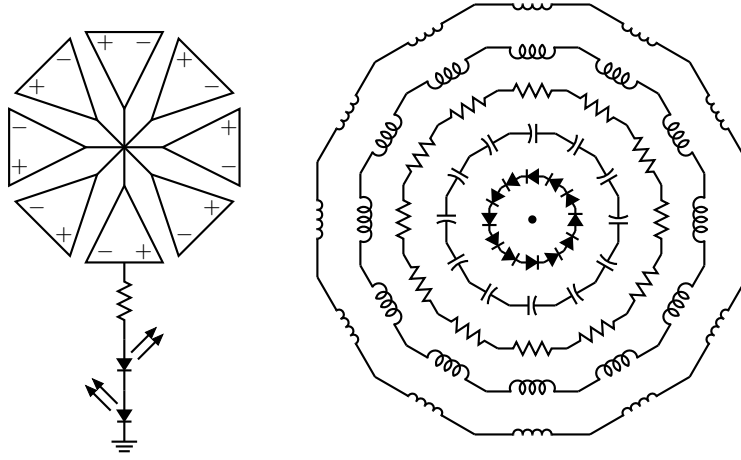


Figure 33: Elements at obtuse angles [ex02.m4].

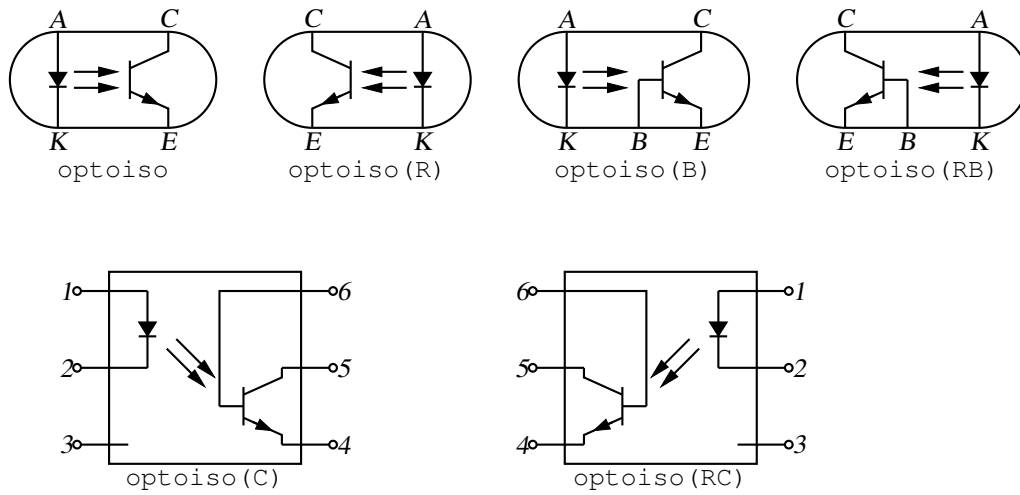


Figure 34: Optical isolator: a circuit with right or left orientation [Optoiso.m4].

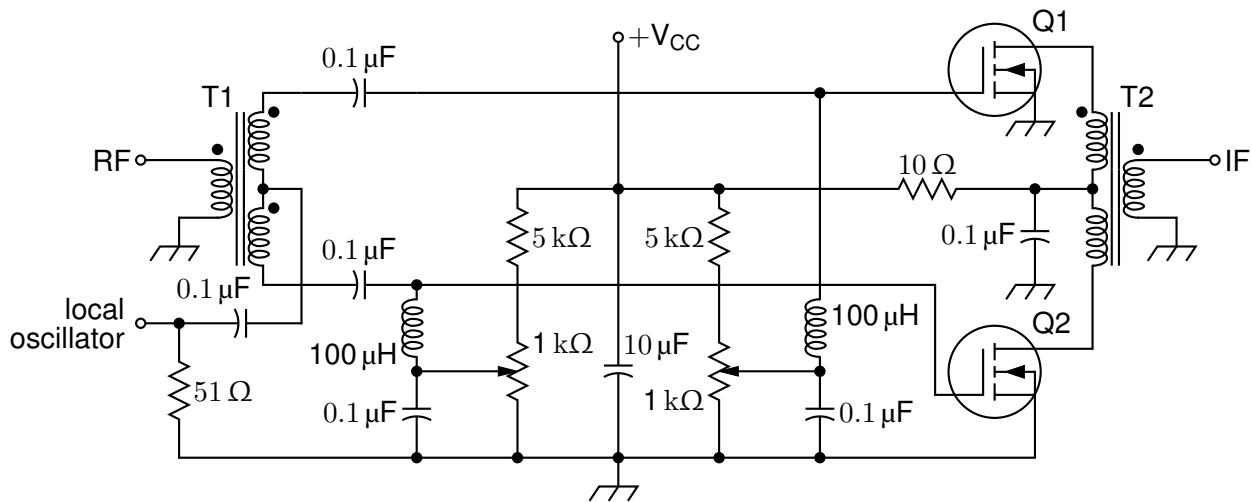


Figure 35: A balanced mixer, using mosfet and a custom transformer [Mixer.m4].

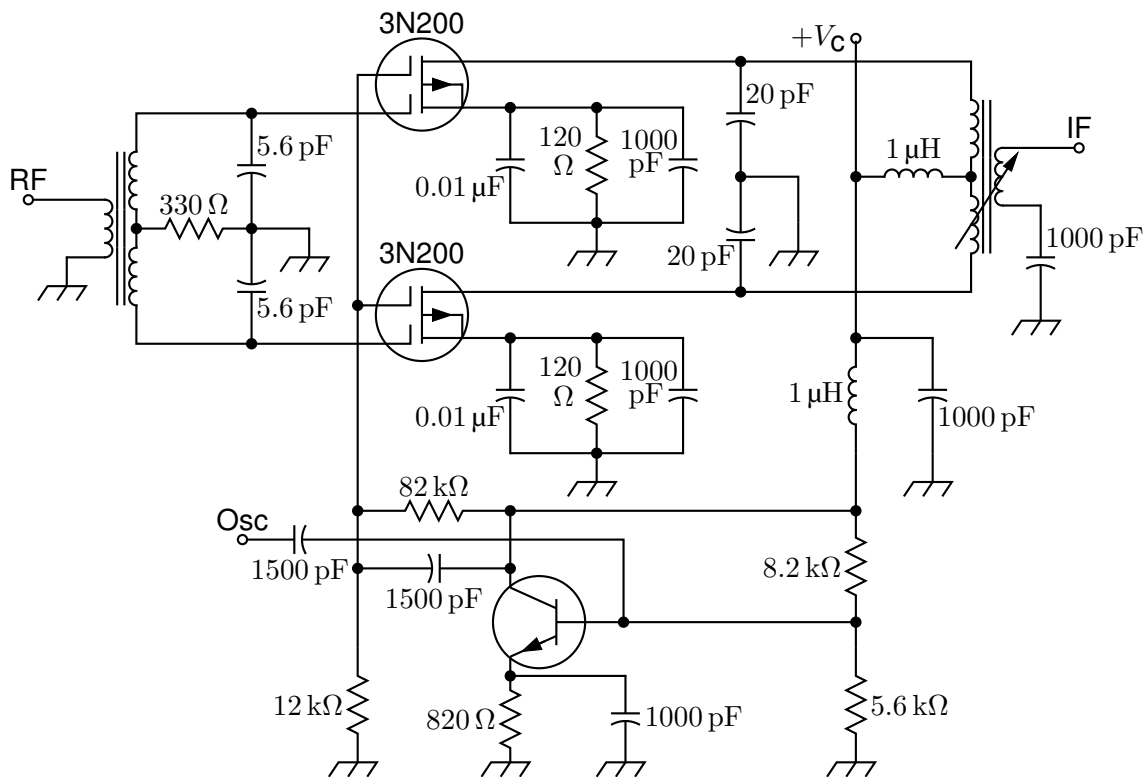


Figure 36: A push-pull mixer, showing FETs with multiple gates [PushPull.m4].

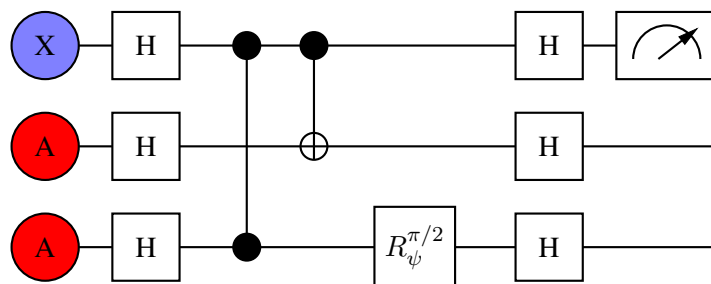


Figure 37: A quantum circuit [Quantum.m4].

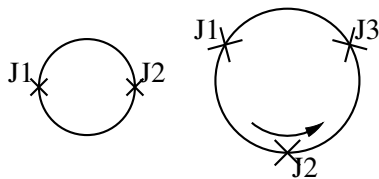


Figure 38: Superconducting quantum interface device (drawing direction down) [SQUID.m4].

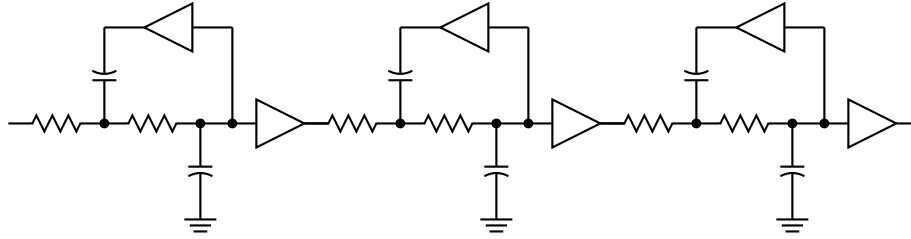


Figure 39: A six-pole filter [Sixpole.m4].

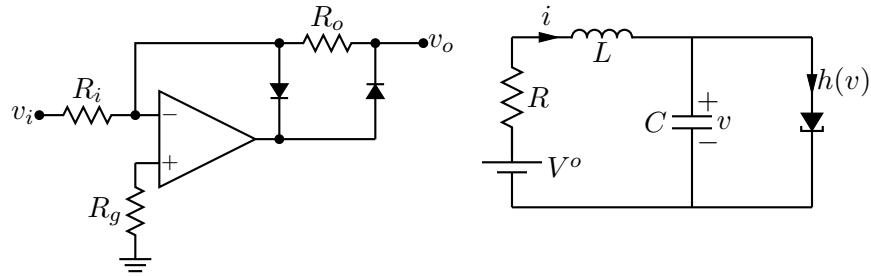


Figure 40: Precision half-wave rectifier and a tunnel diode circuit (illustrating opamp, diode, resistor, ground, and labels) [ex18.m4].

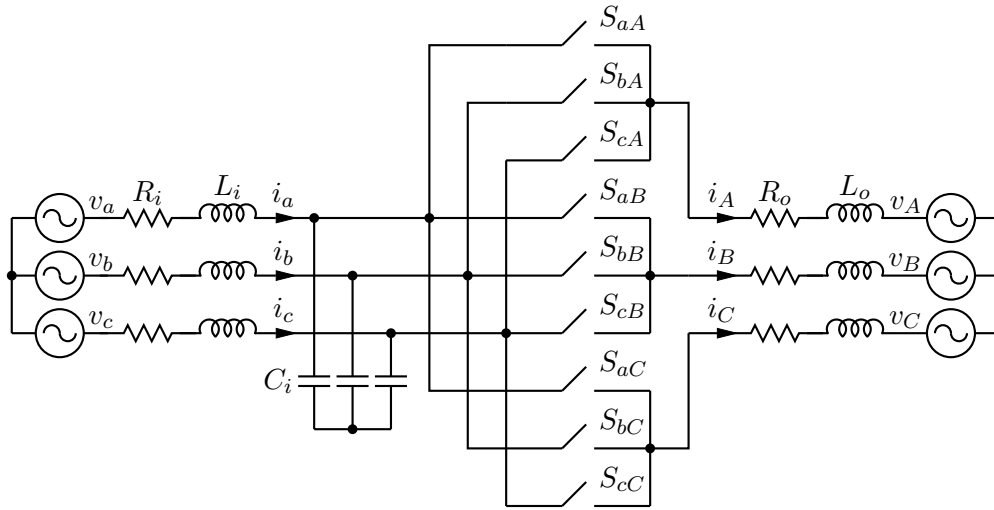


Figure 41: A three-phase switched AC-AC converter [MC.m4].

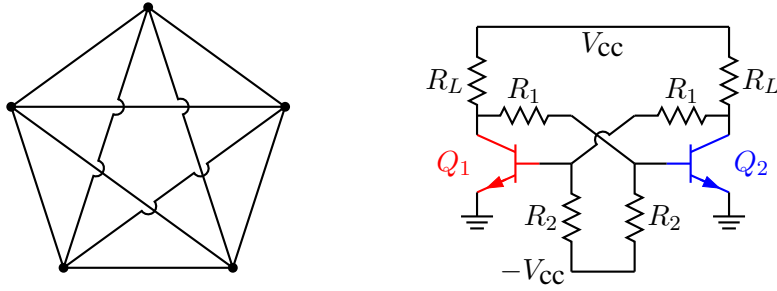


Figure 42: Non-planar graph and bistable circuit (illustrating the crossover macro and colored elements) [ex10.m4].

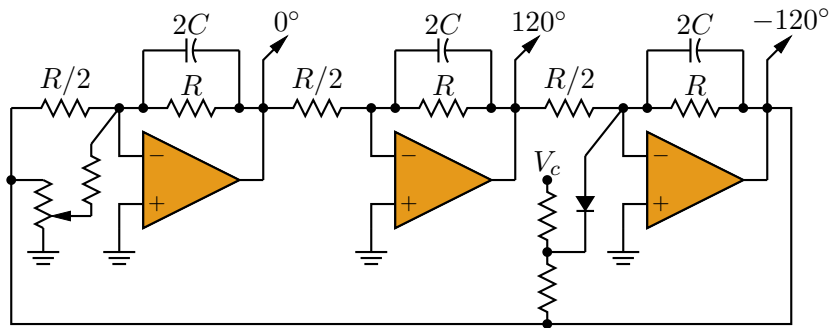


Figure 43: Three-phase oscillator [Three.m4].

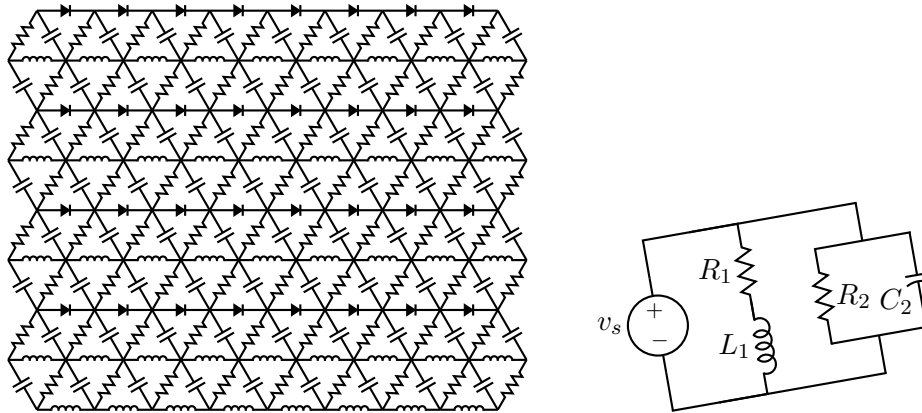


Figure 44: A repetitive network created by Pic looping and a skewed circuit used to test the macro parallel [ex17.m4].

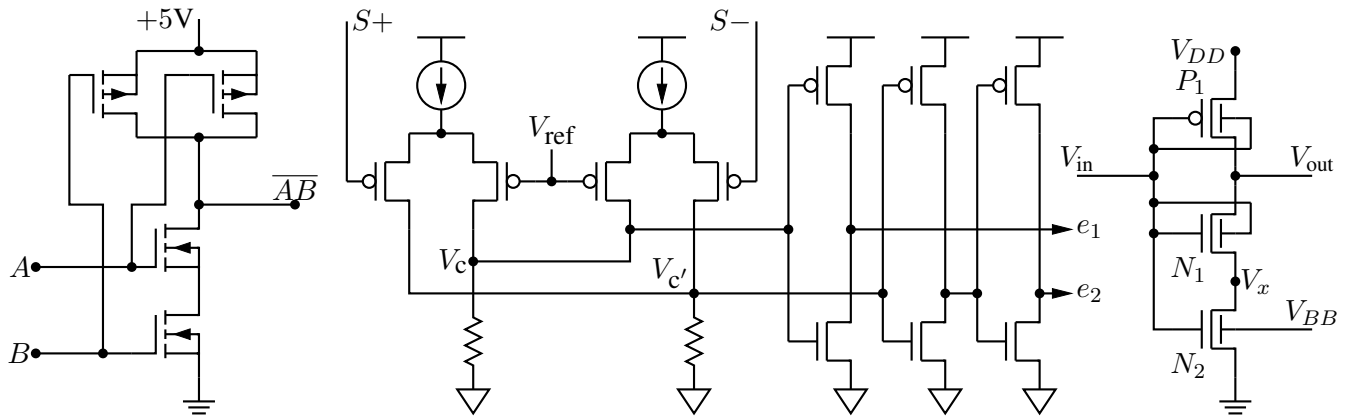


Figure 45: A CMOS NAND gate, a test circuit, and an X MOSFET example [ex12.m4].

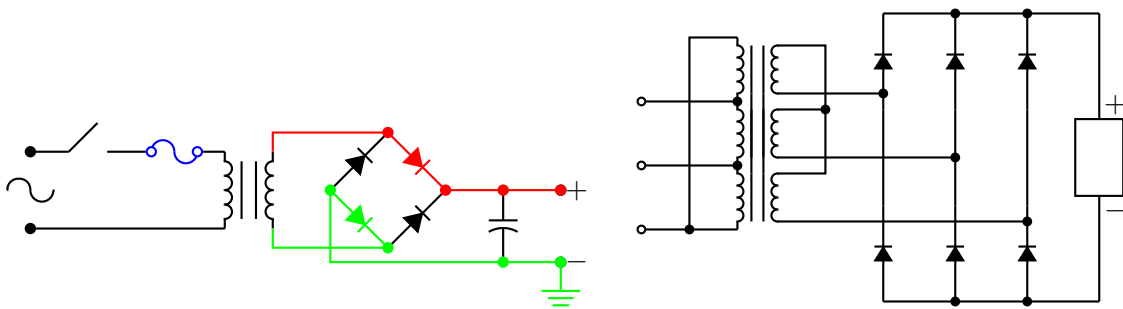


Figure 46: An elementary power supply circuit with colored elements, and a multiple-winding transformer with 3-phase rectifier [pwrsupply.m4].

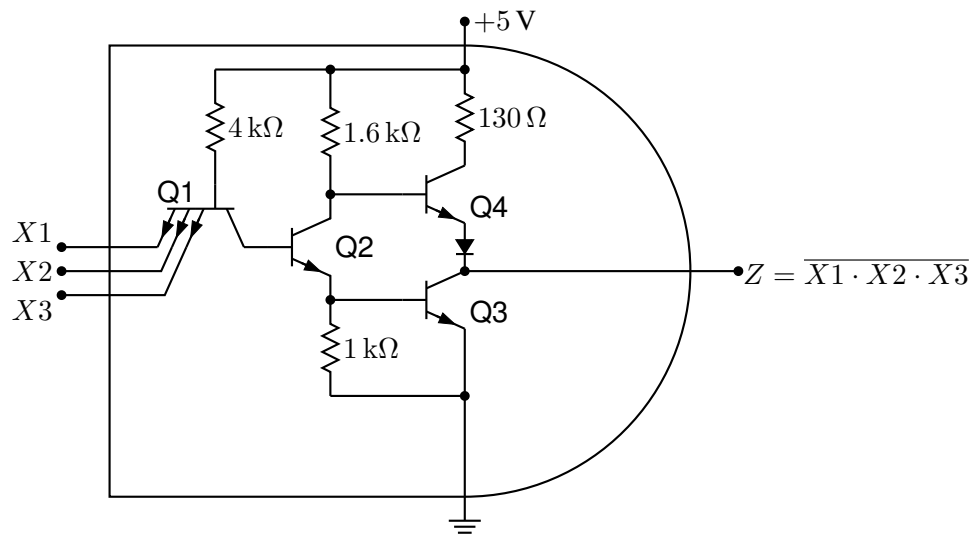


Figure 47: TTL NAND gate illustrating a transistor with multiple emitters [TTLnand.m4].

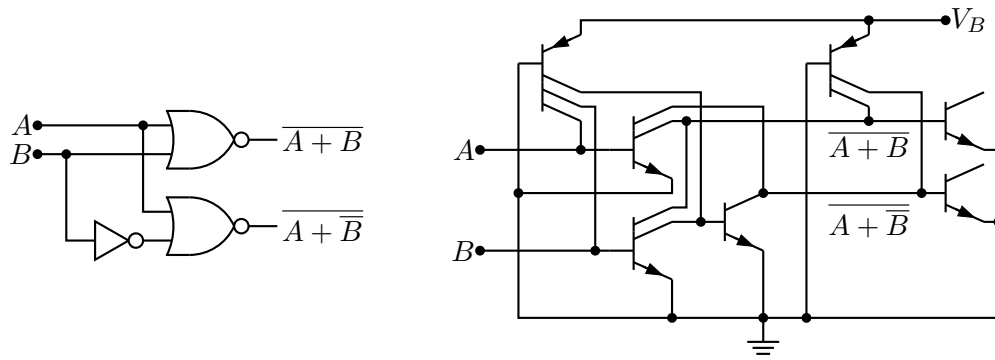


Figure 48: Gate circuit and equivalent embedded I^2L components illustrating multiple collectors [I2L.m4].

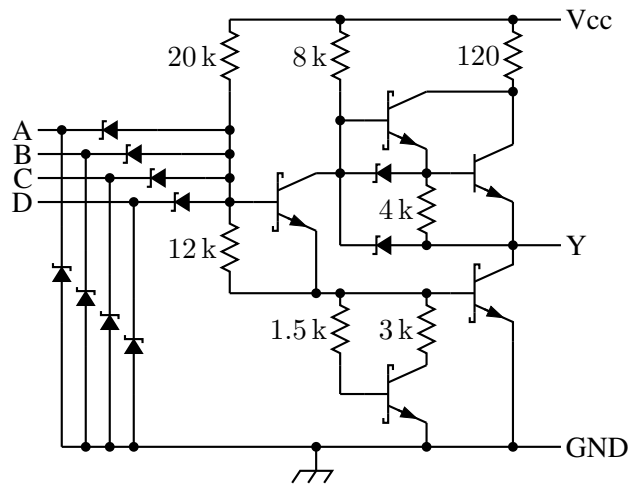


Figure 49: A 4-input NAND circuit illustrating the S (Schottky) option of bi_trans [Schottky.m4].

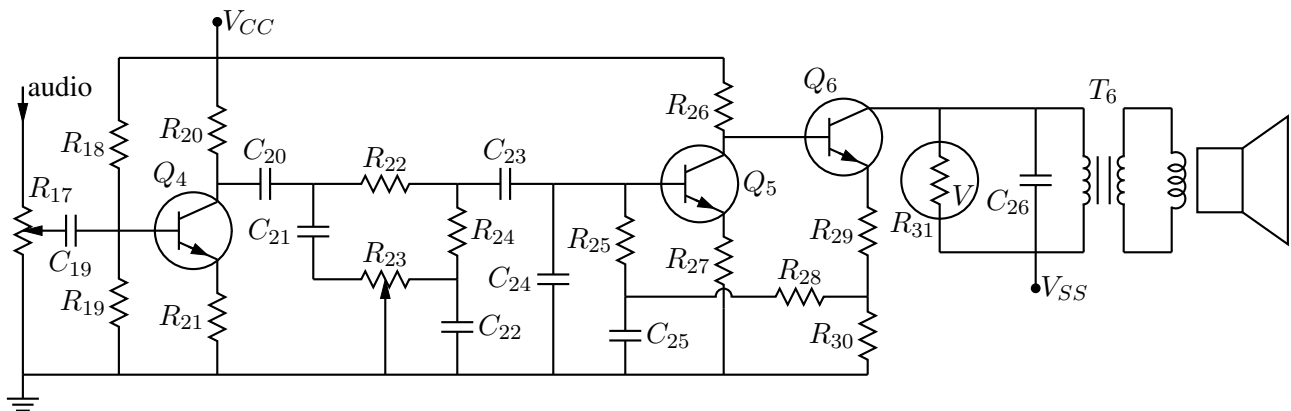


Figure 50: Transistor radio audio chain [ex11.m4].

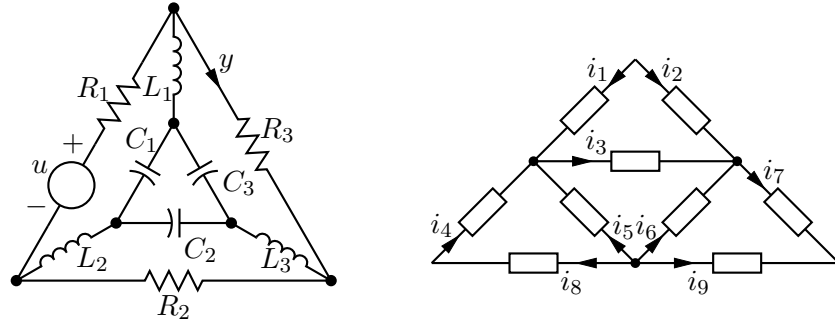


Figure 51: Labels on non-manhattan elements [ex04.m4].

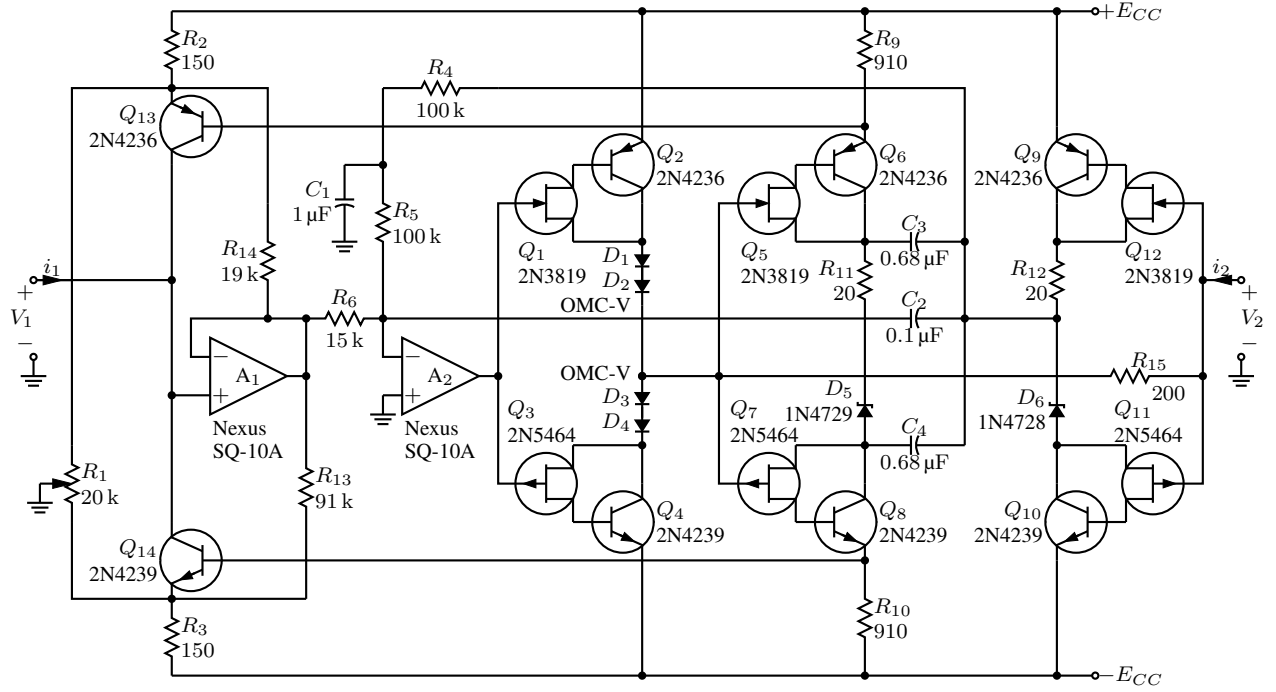


Figure 52: Realization of a controlled source (illustrating stacked element labels) [Csource.m4].

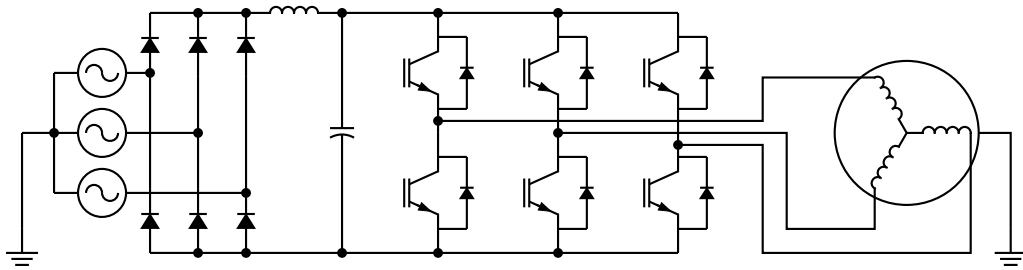


Figure 53: Synchronous machine driven by variable-speed drive and rectifier [Drive.m4].

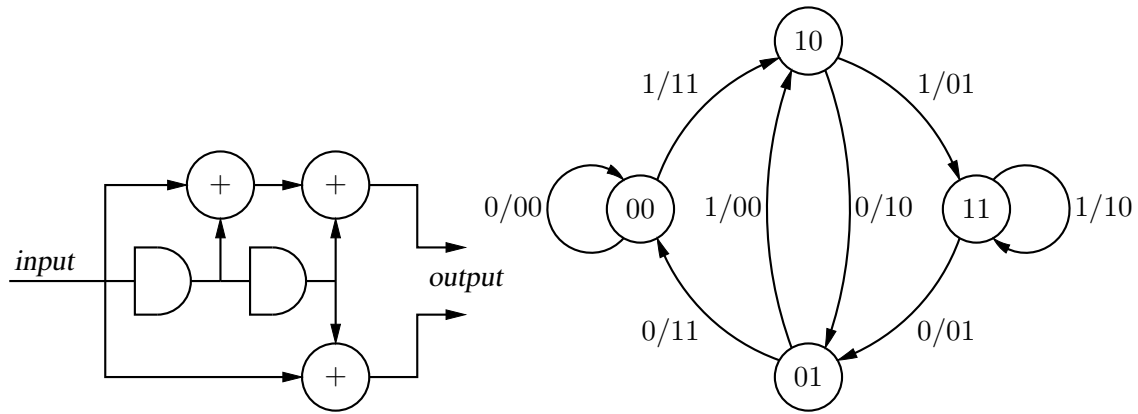


Figure 54: A rate 1/2 binary convolutional coder and its state diagram [ex16.m4].

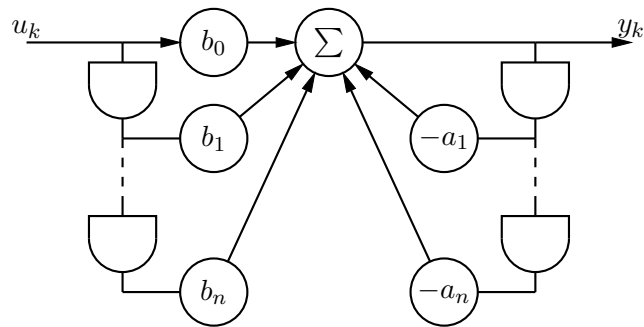


Figure 55: Digital filter [ex03.m4].

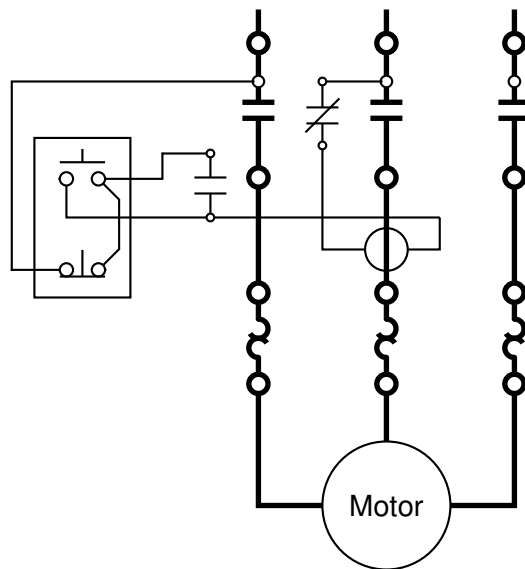


Figure 56: Motor control connections [MotorControl.m4].

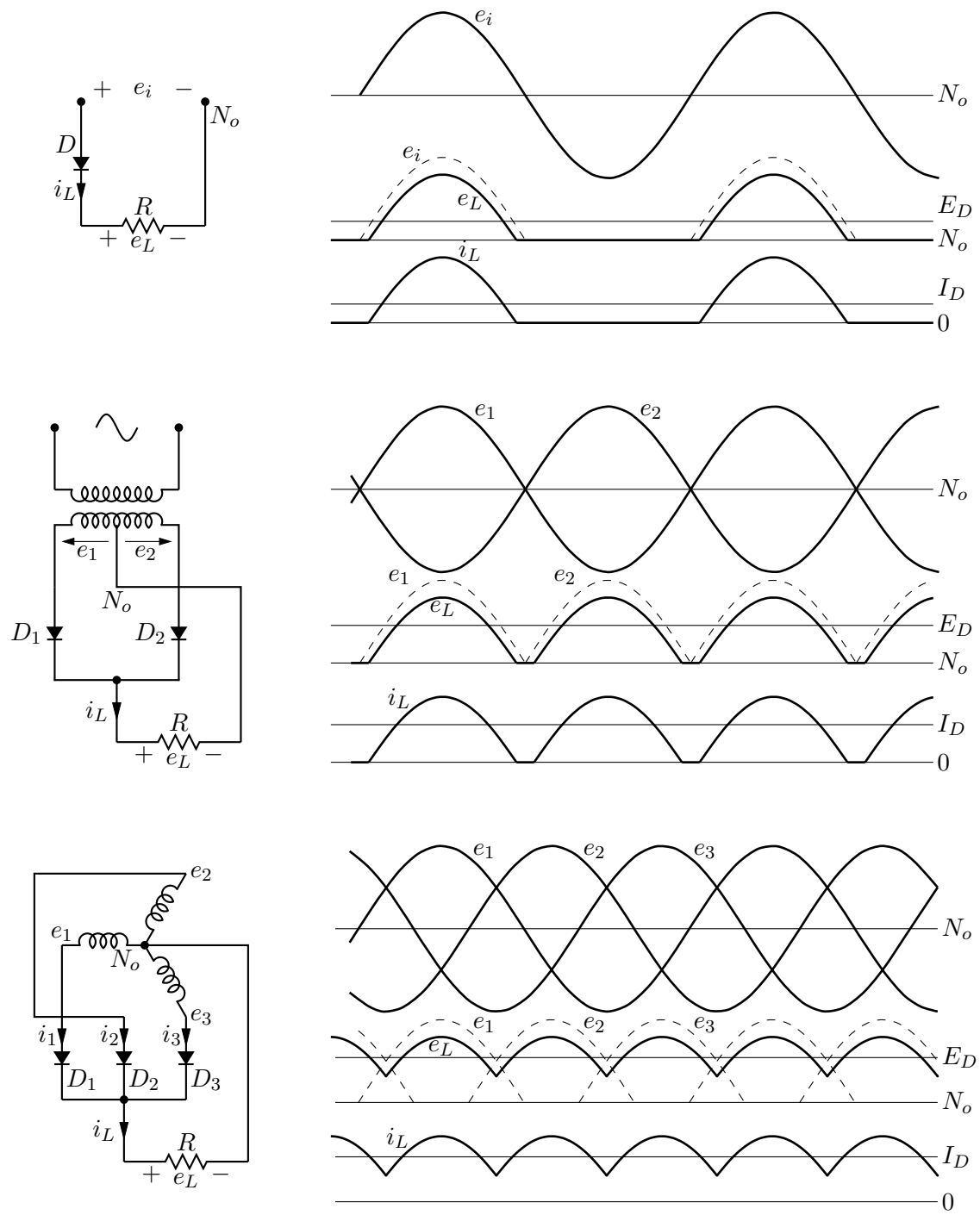
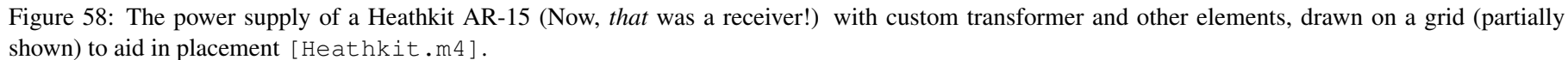


Figure 57: Rectifier circuits and waveforms [Rectifiers.m4].



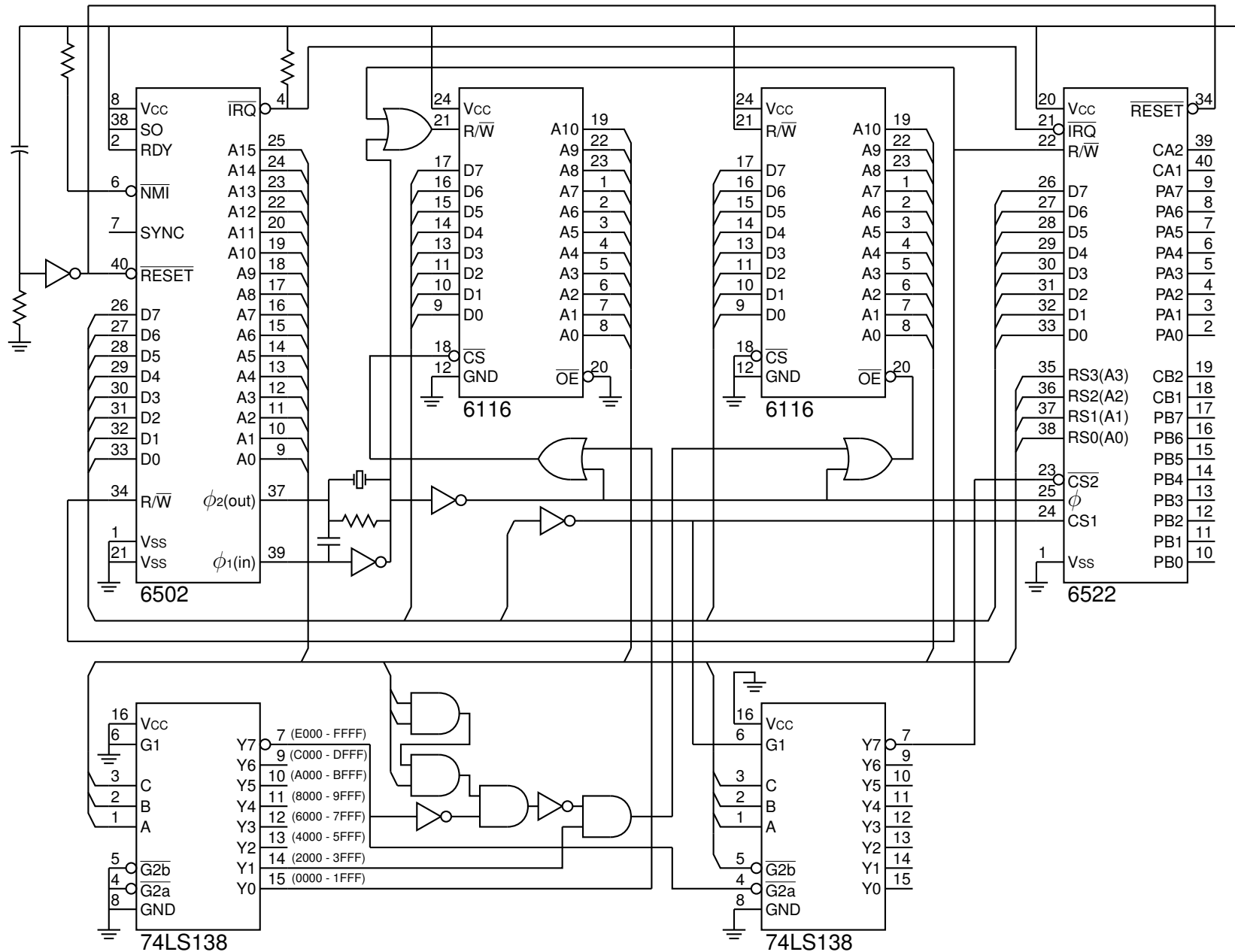


Figure 59: A digital circuit of moderate size, redrawn from M. P. MacIenlan and G. M. Burns, "An Approach to Drawing Circuit Diagrams for Text Books," Tugboat (12)1, March 1991, pp. 66-69 [lcct.m4].

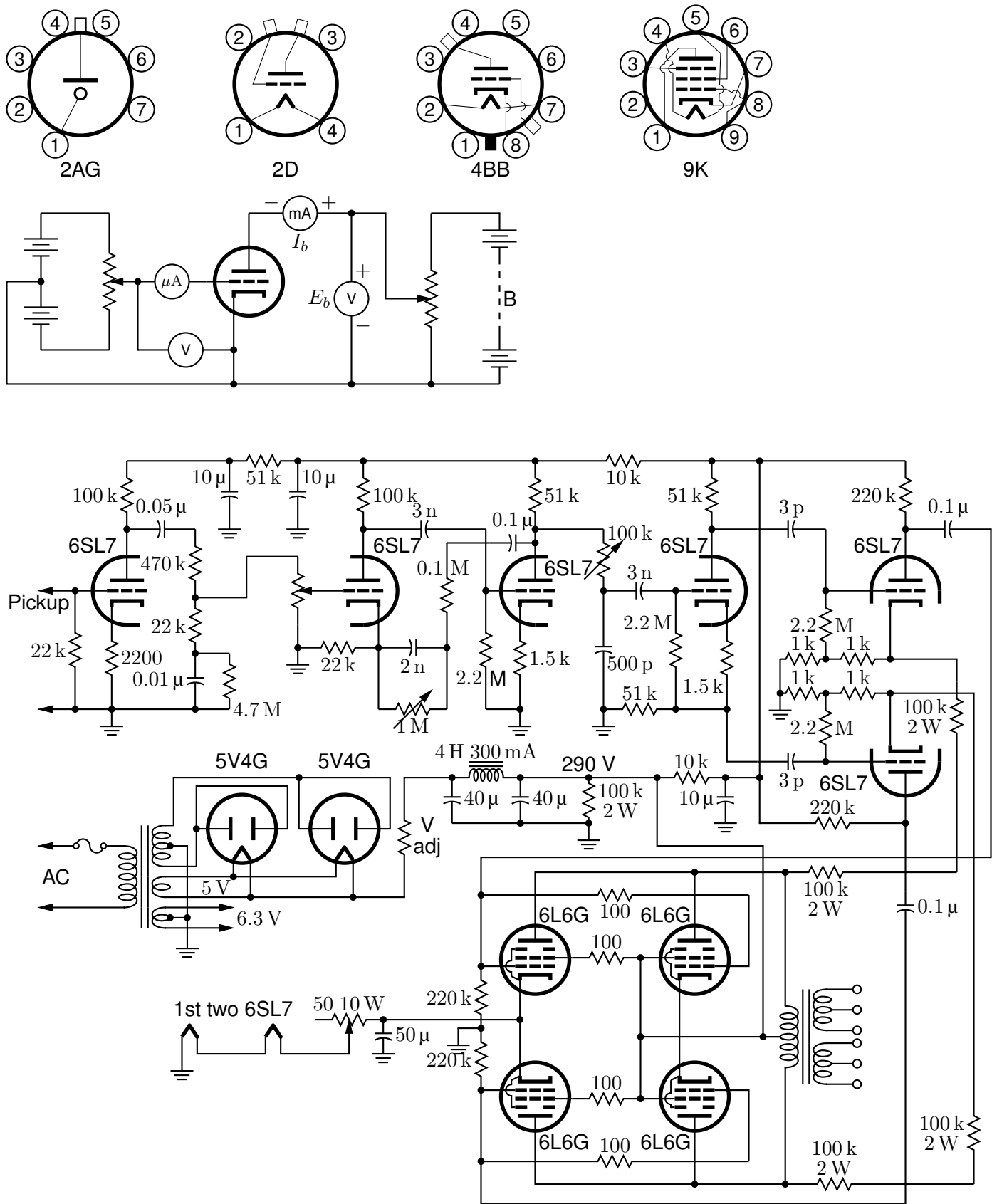


Figure 60: Electron-tube diagrams: a few bottom-view base diagrams, a generic triode test circuit, and a 25-watt audio amplifier adapted from F. Langford-Smith, *Radiotron Designer's Handbook*, fourth edition, Harrison, NJ: Radio Corporation of America, 1952 [Tubediags.m4].

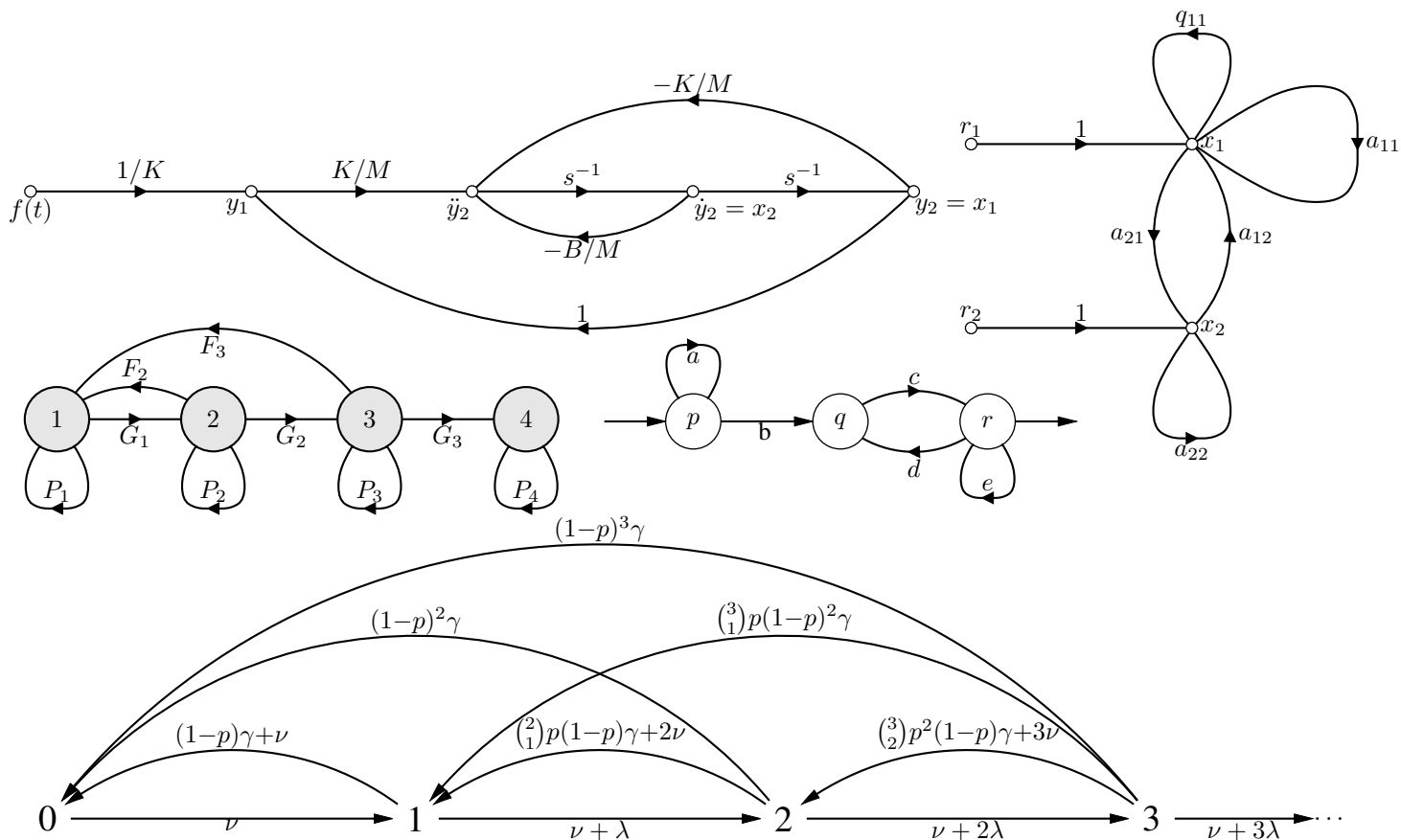


Figure 61: Signal-flow graphs [sfg.m4].

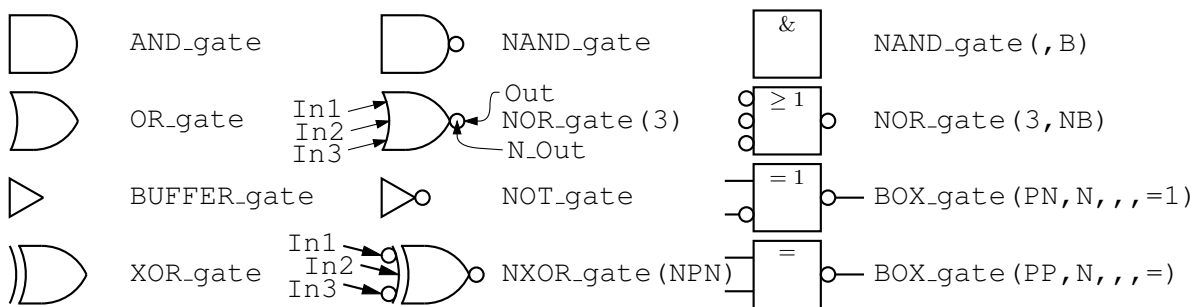


Figure 62: Basic logic gates [Logic.m4].

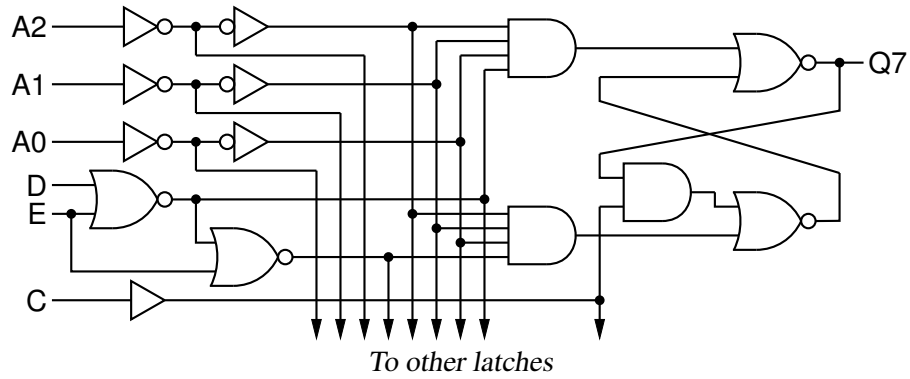


Figure 63: General-purpose latch: a small logic circuit [ex08.m4].

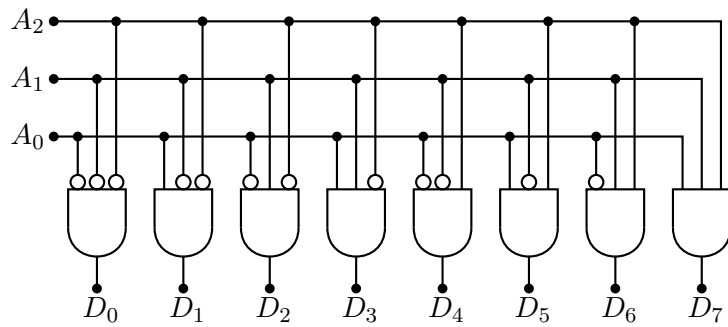


Figure 64: Decoder logic, constructed using the `for_macro` [Decoder.m4].

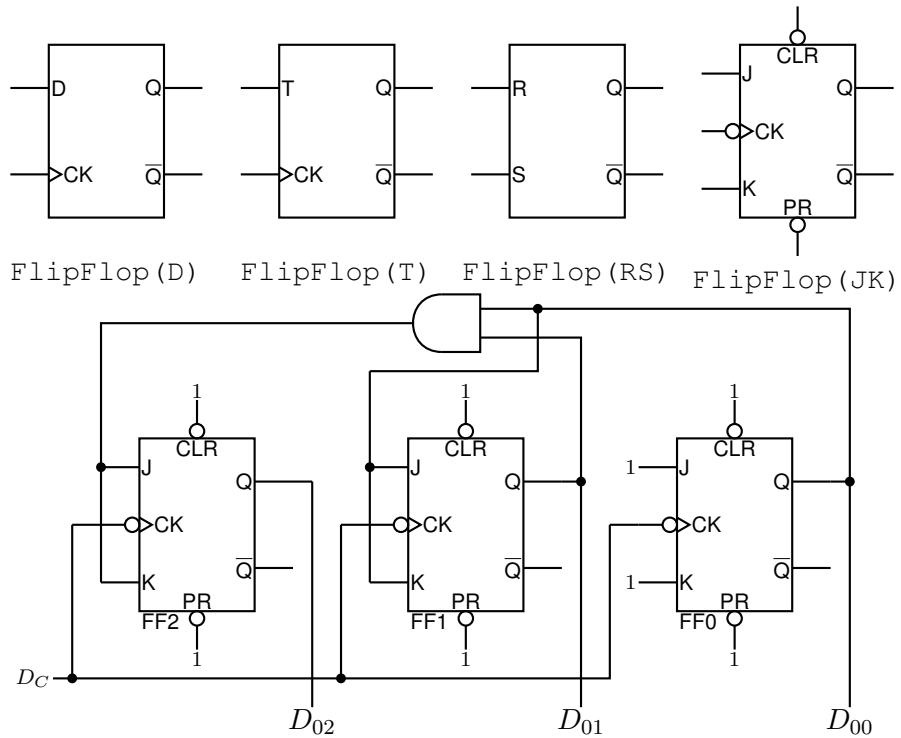


Figure 65: Some flip-flops [ex21.m4].

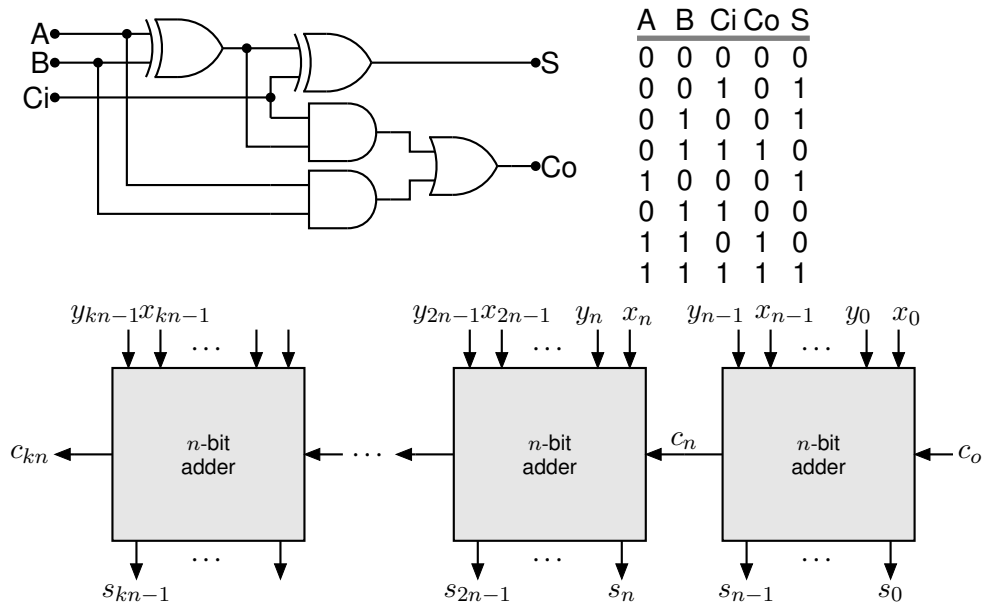


Figure 69: A full adder and a cascade of n -bit adders [Adder.m4].

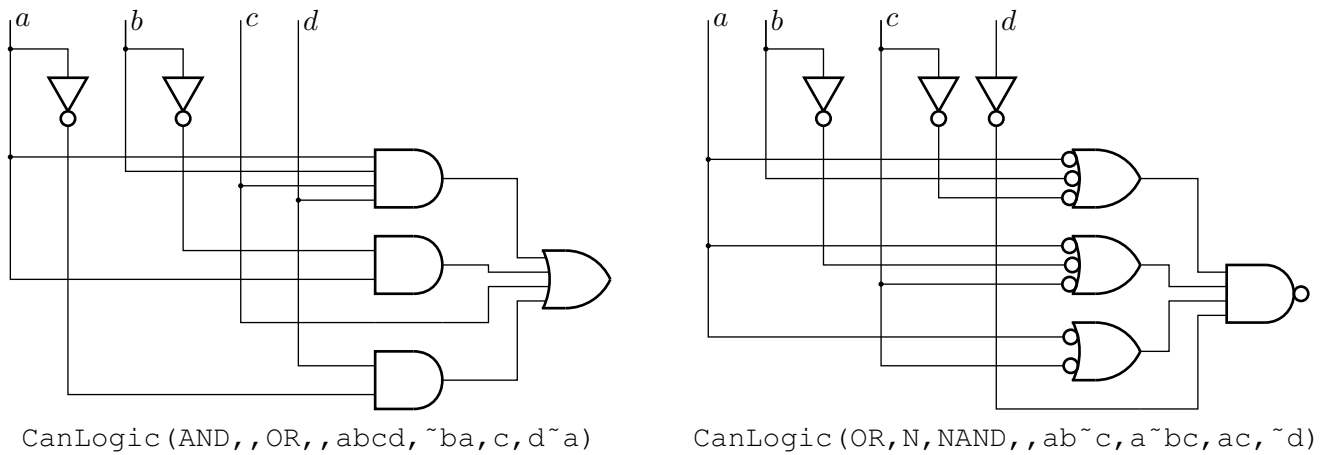


Figure 70: A way of automatically drawing two-layer logic diagrams [CanLogic.m4].

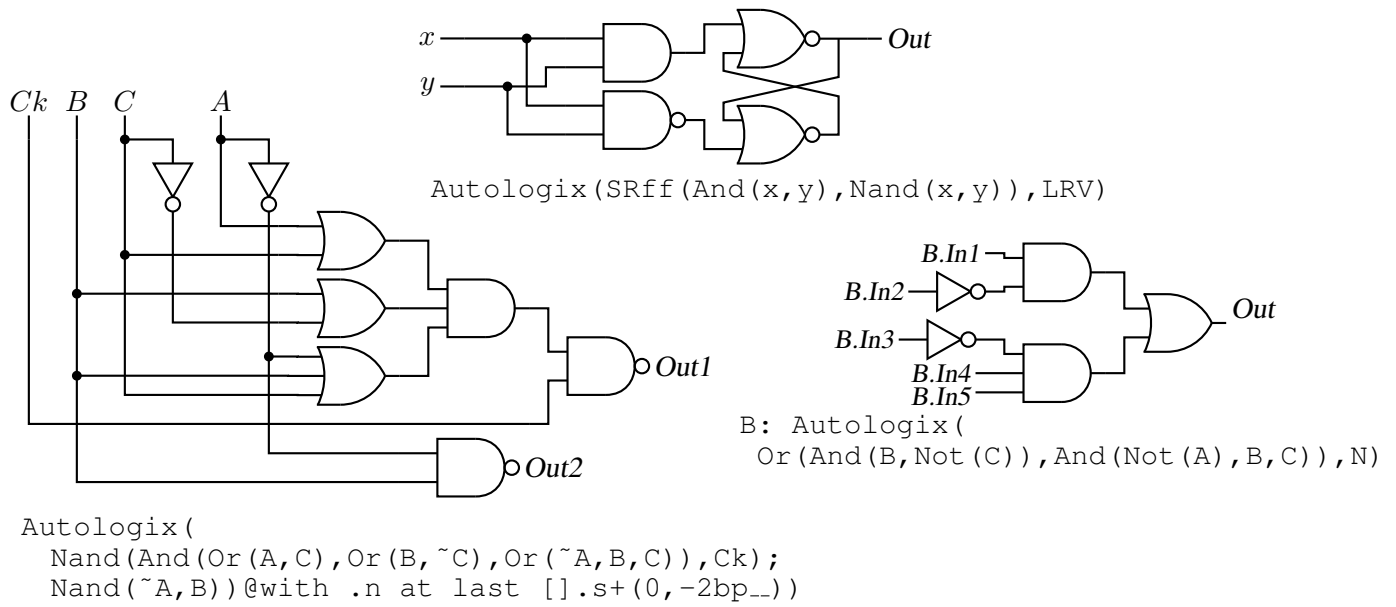


Figure 71: The `Autologix` (*Boolean expression; Boolean expression... , options*) macro automatically draws Boolean expressions in function notation. The function tree is drawn, then a row or column of inputs, then the connections. The default result is on the left, a custom element at the top, and a tree of gates only is shown on the right. [Alogix.m4].

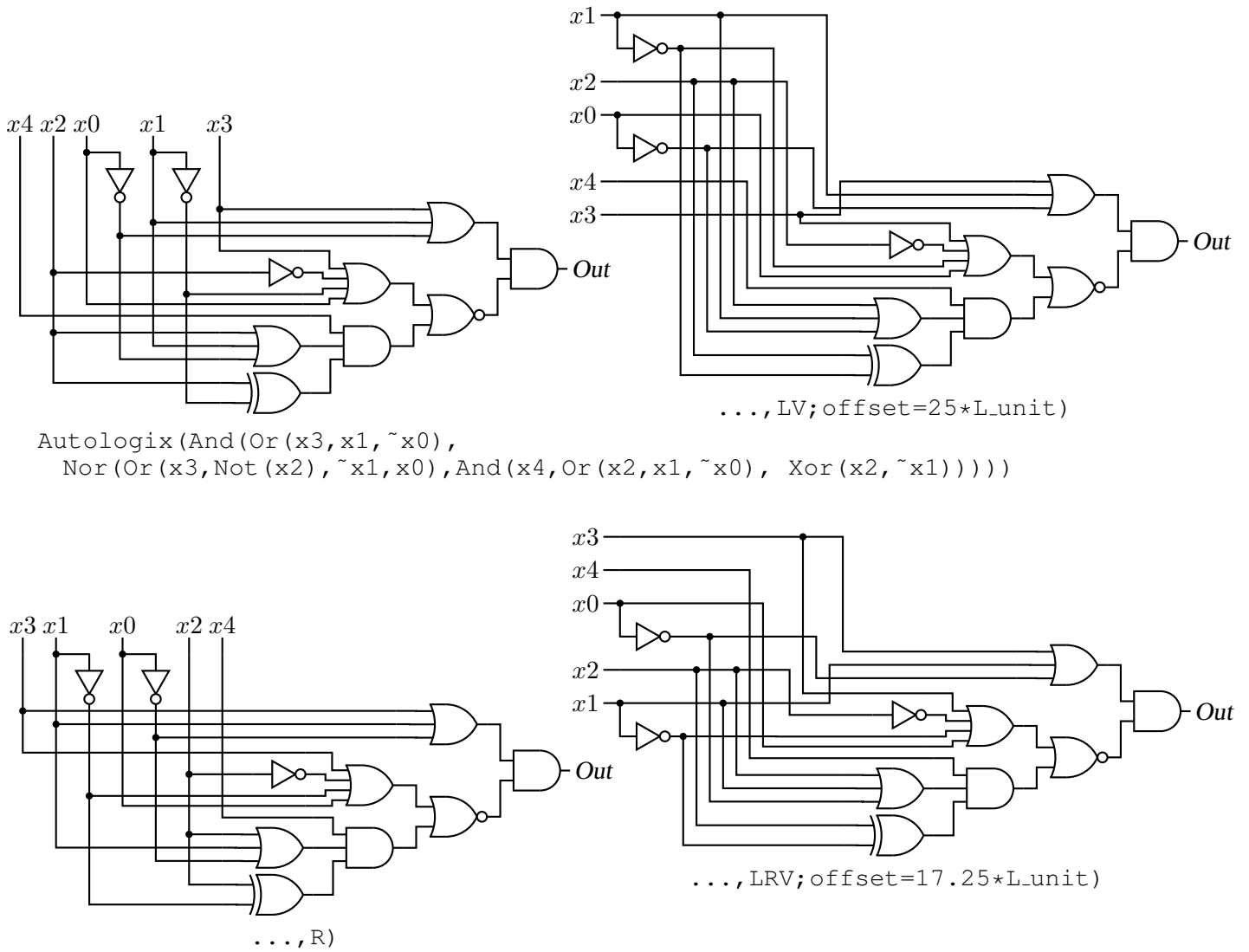


Figure 72: The Autologix macro can draw inputs on the left but the added drawing complexity may require hand tuning with second-argument options: L puts the inputs on the left, R reverses their order, V scans the input arguments in reverse order, and offset=value displaces the array of inputs [ABlogix.m4].

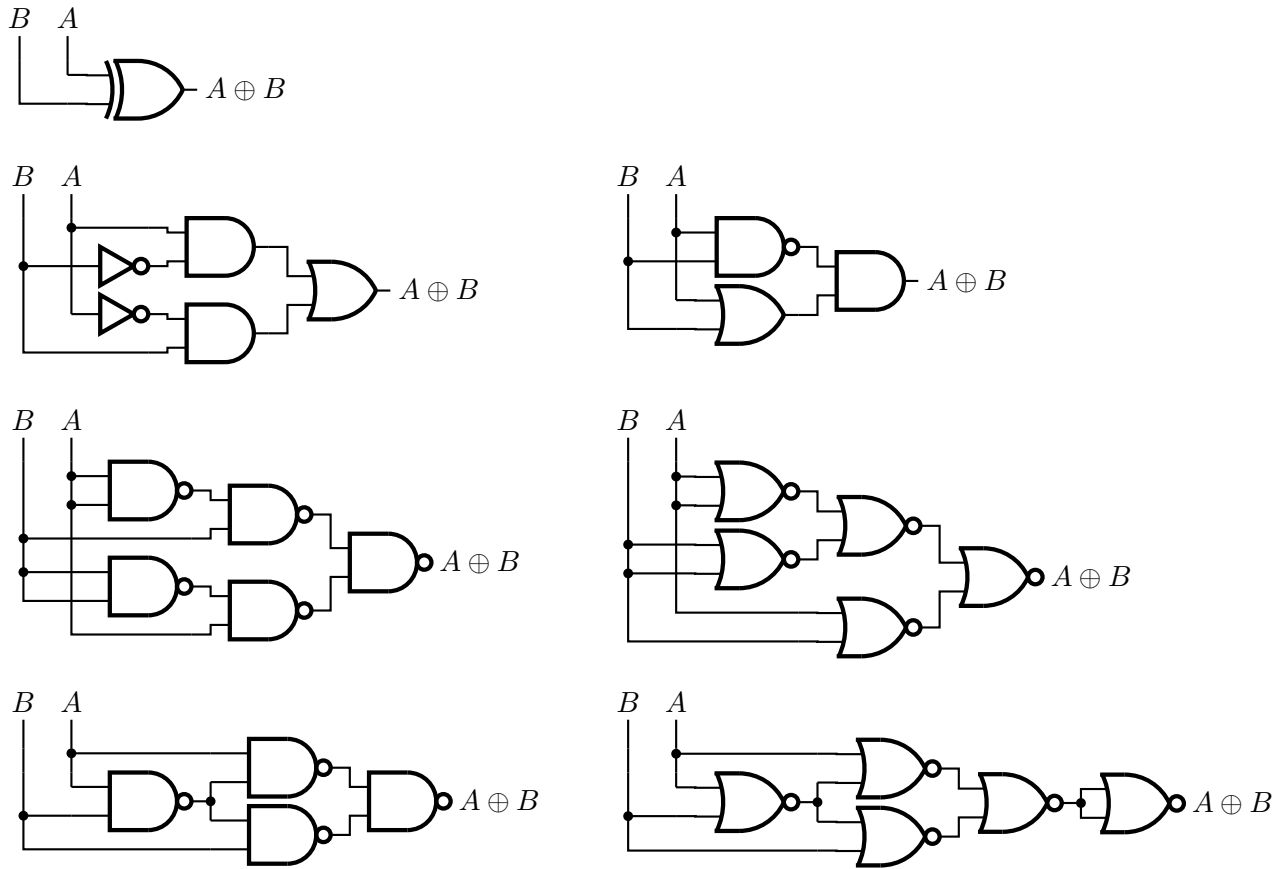


Figure 73: Realizations of the XOR function using Autologix [XOR.m4].

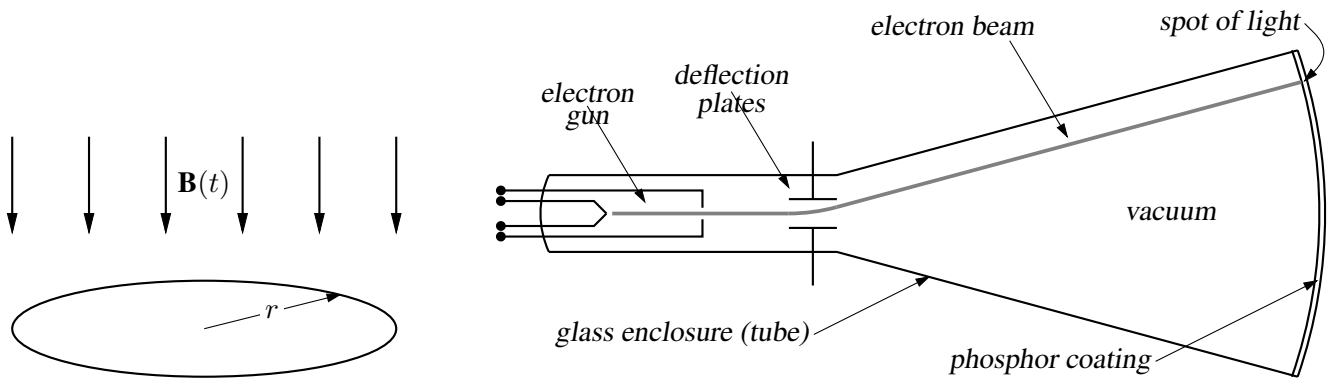
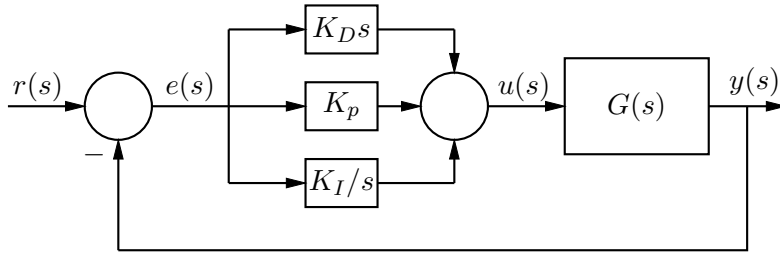
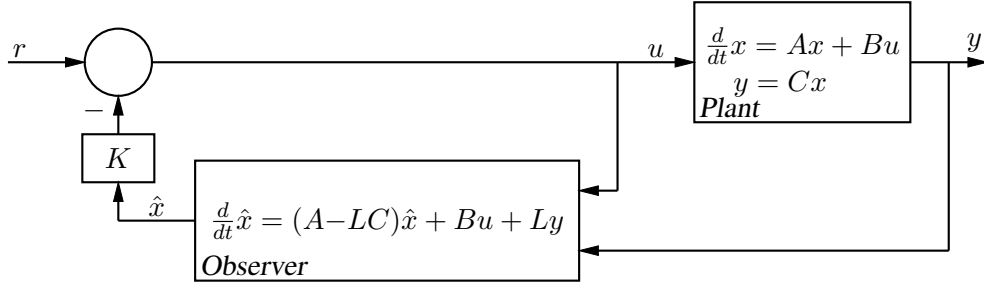


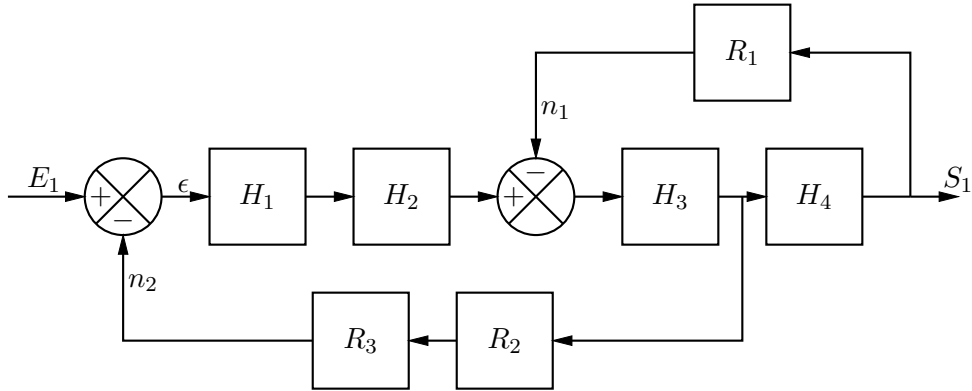
Figure 74: Line diagrams [ex00.m4].



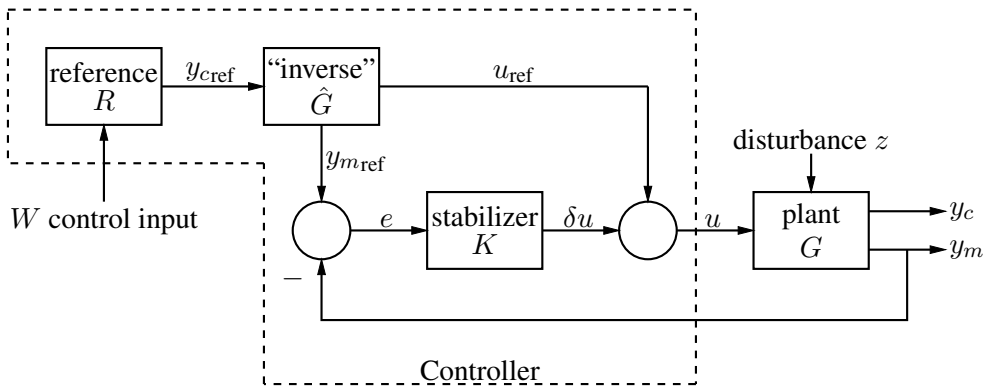
(a) *PID* control



(b) Output feedback with a full-order observer



(c) A multiblock example



(d) Nonlinear feedforward (for performance) and small-signal feedback (for stability)

Figure 75: Control-system block diagrams that do not require `m4 [control.m4]`.

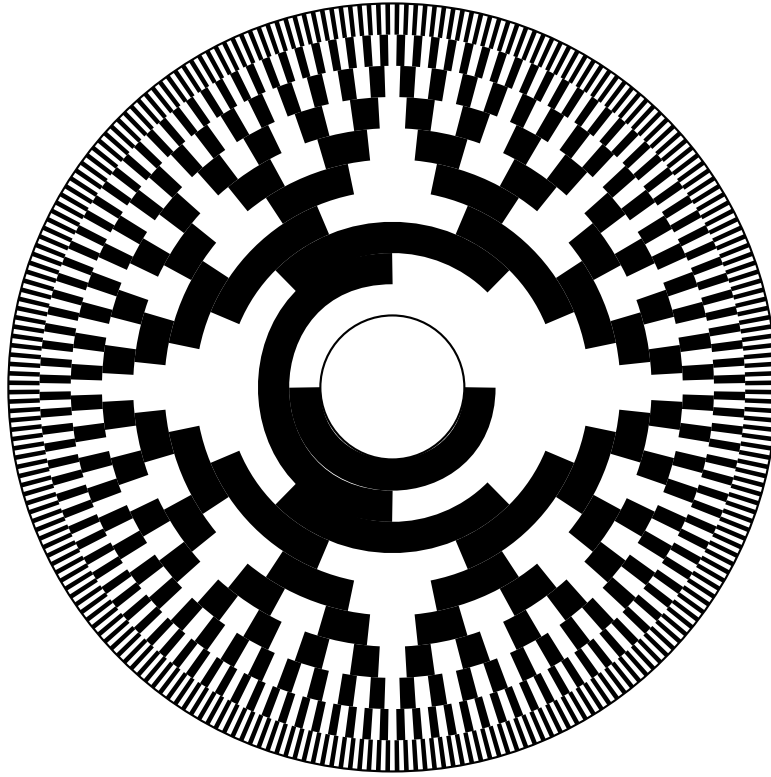


Figure 76: Gray code 10-bit encoder disk pattern [GrayCode.m4].

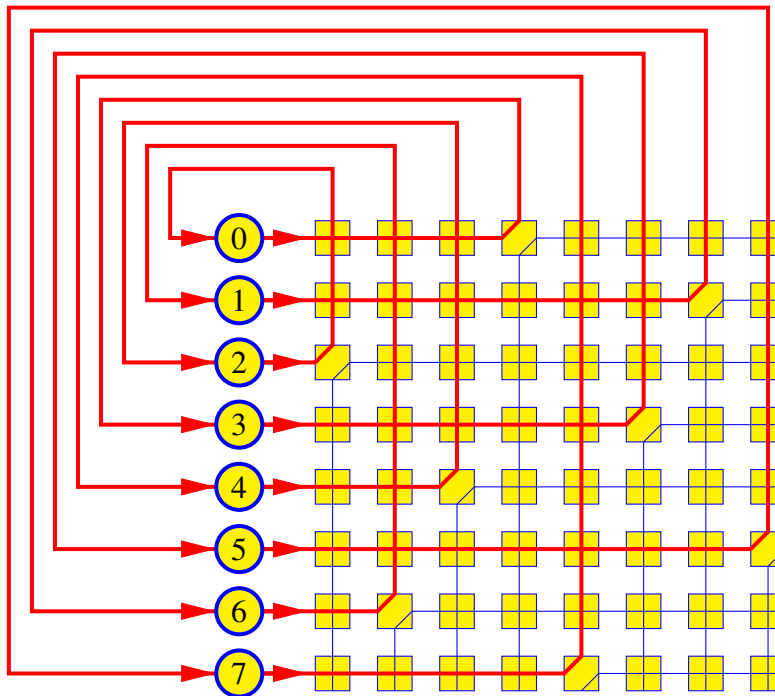


Figure 77: A crossbar switch [Crossbar.m4].

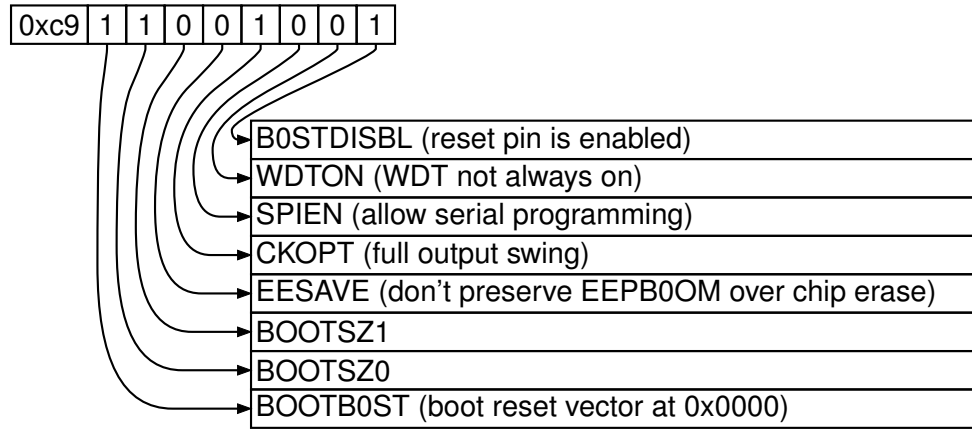


Figure 78: Elementary splines [Byte.m4].

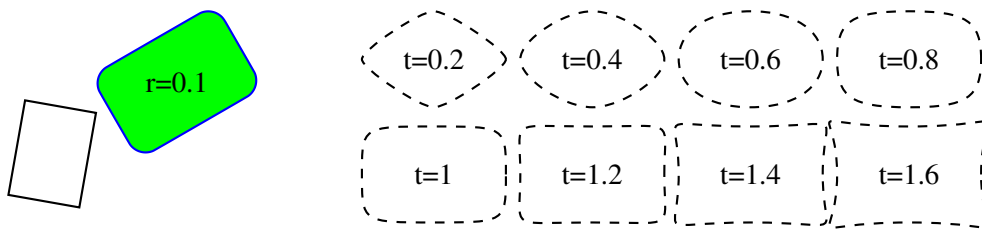


Figure 79: The macro `rotbox (wid,ht,type,[r|t=val])` draws a box in the current direction [Rotbox.m4].

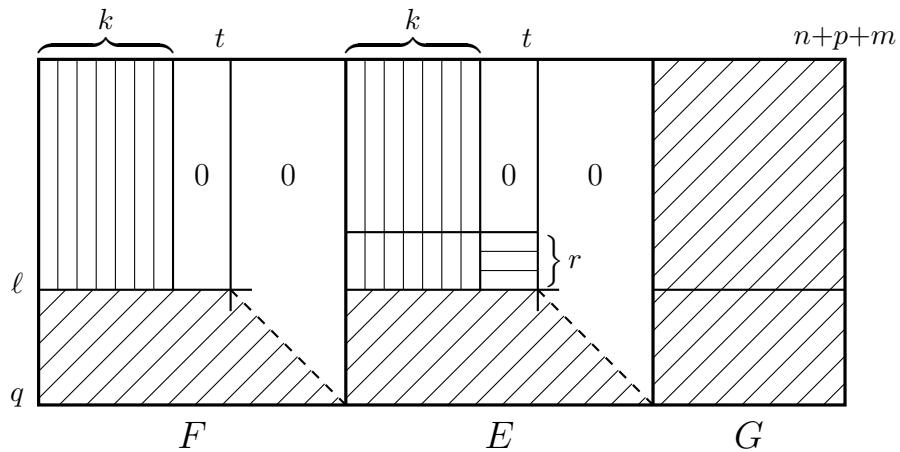
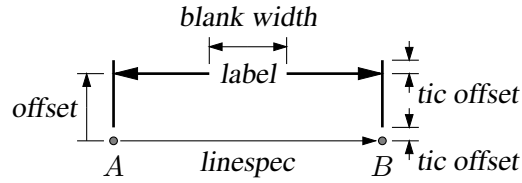
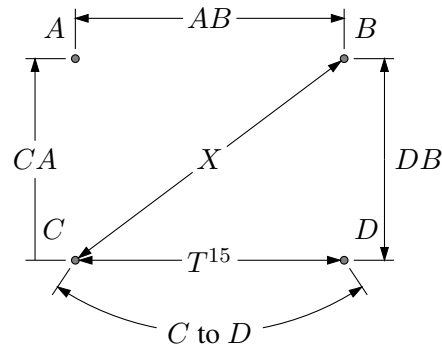
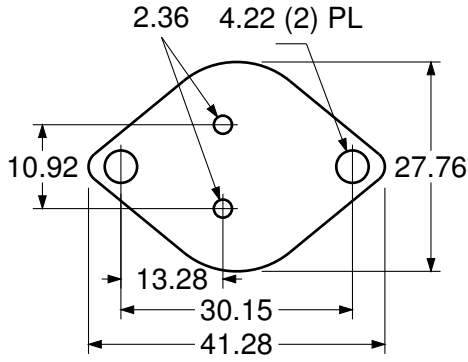


Figure 80: Crosshatching by for loops [ex06.m4].



```
dimension_(from A to B,0.3,$AB$,20bp_)
dimension_(from C to B,, $X$,16bp_)
dimension_(from C to A,0.3,$CA$,14bp_,->)
dimension_(from D to B,-0.3,"$DB$" ljust)
dimension_(from C to D,,s_box($T^{%g}$,15),W)
arcdimension_(from C to D with .c at \
0.5 between A and B,12bp_,s_box($C$ to $D$),W)
```

```
dimension_(from A to B,0.5,\sl label,29bp_,0.1)
```

Figure 81: Illustrating the macro `dimension_(linespec, offset, label, D|H|W|blank width, tic offset,<-|->)`. A negative second argument implies an offset to the right of the `linespec` direction. A `label` starting with `"` or `sprintf` is copied literally. If `label` is an `s_box(...)` then setting argument 4 to H, W, or D tailors the blank width to the `s_box` height, width, or diagonal respectively; i.e., W is equivalent to `s_wd+textoffset*2`. The macro `arcdimension_` is similar but the first argument specifies the arc to be dimensioned and the second argument is the outward radial offset of the dimension arrow arc. [ex09.m4].

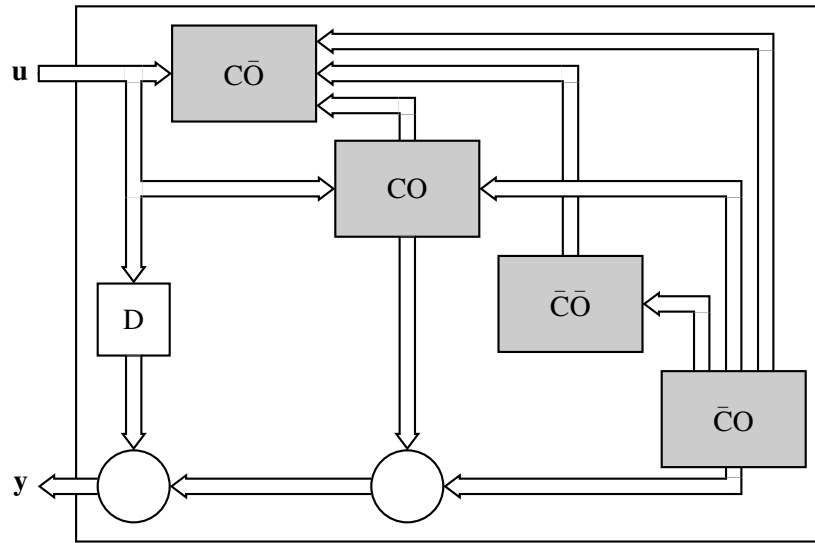


Figure 82: Use of `darrow` [ex05.m4].

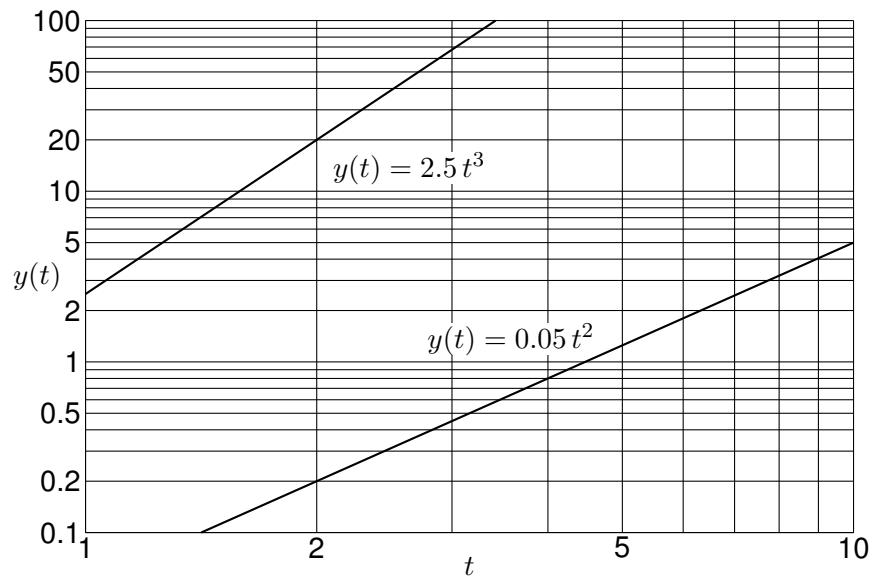


Figure 83: A graph drawn using the pic language [Loglog.m4].

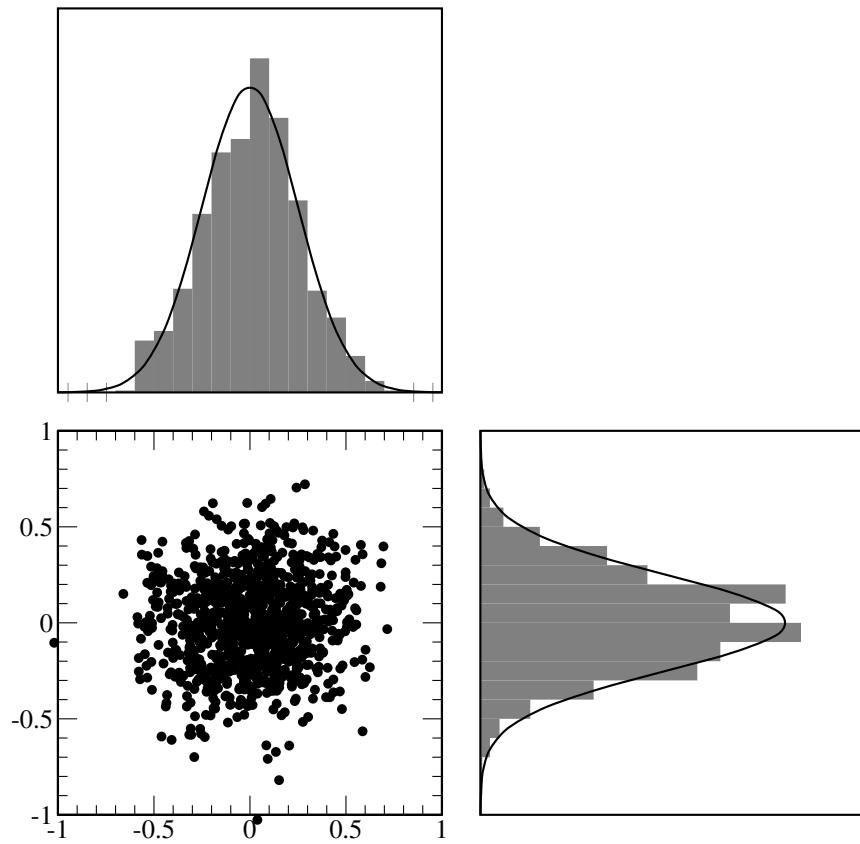


Figure 84: Testing random numbers [random.m4].

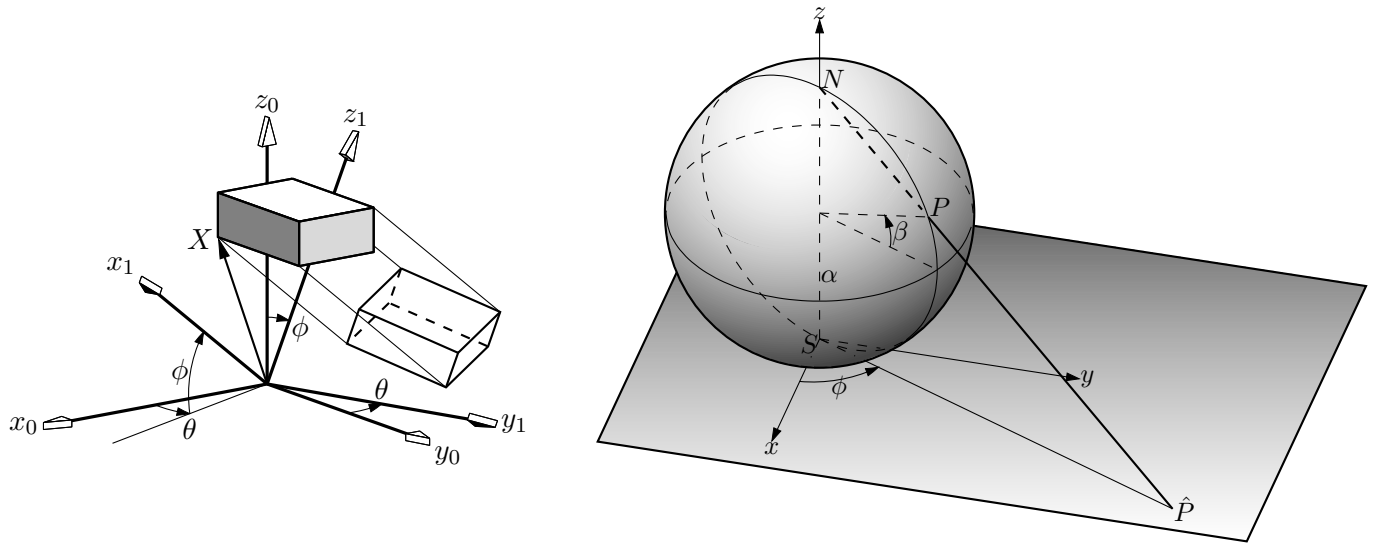


Figure 85: Test of `project` and other `lib3D` macros, showing the projection of a solid onto the y_1, z_1 plane by sighting along the x_1 axis. [exp.m4].

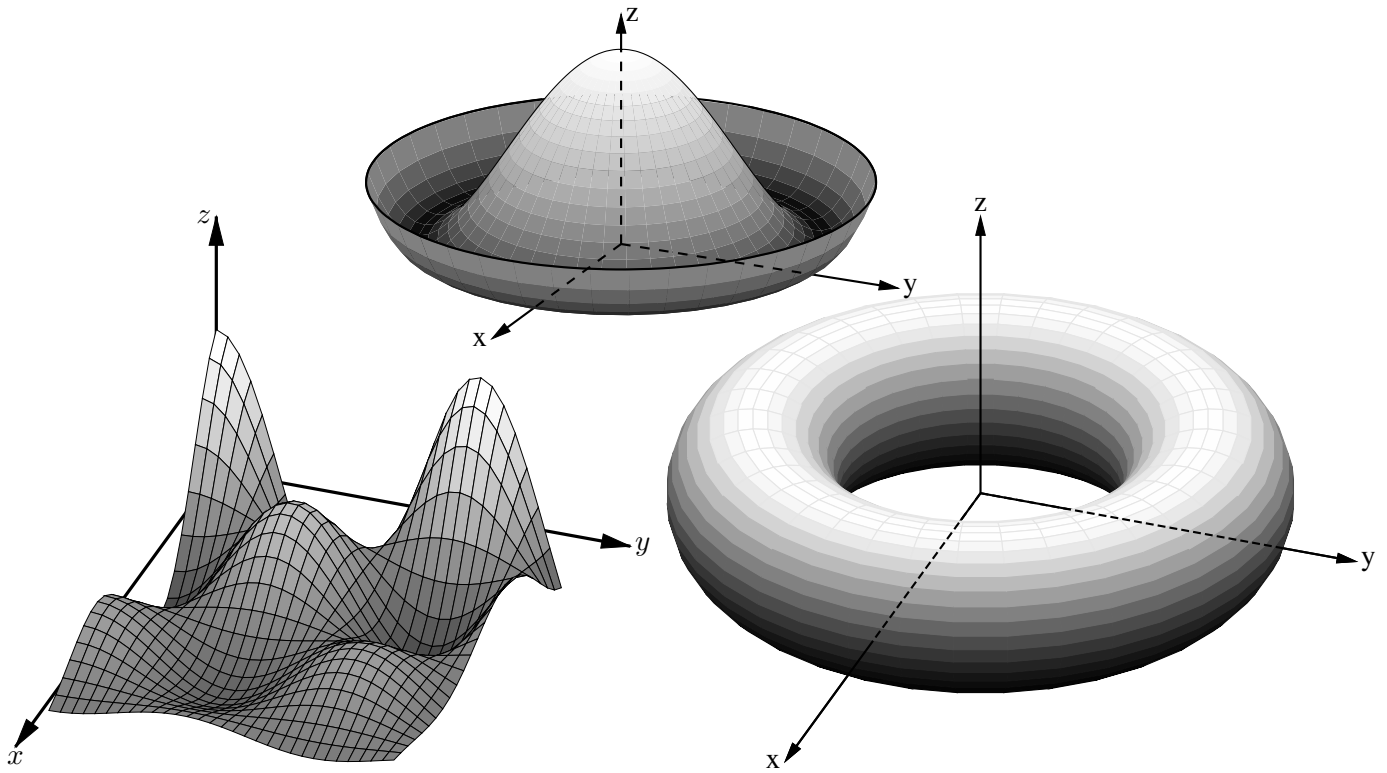


Figure 86: Plotting surfaces using gray scales. A sort algorithm determines plotting order [graysurf.m4].

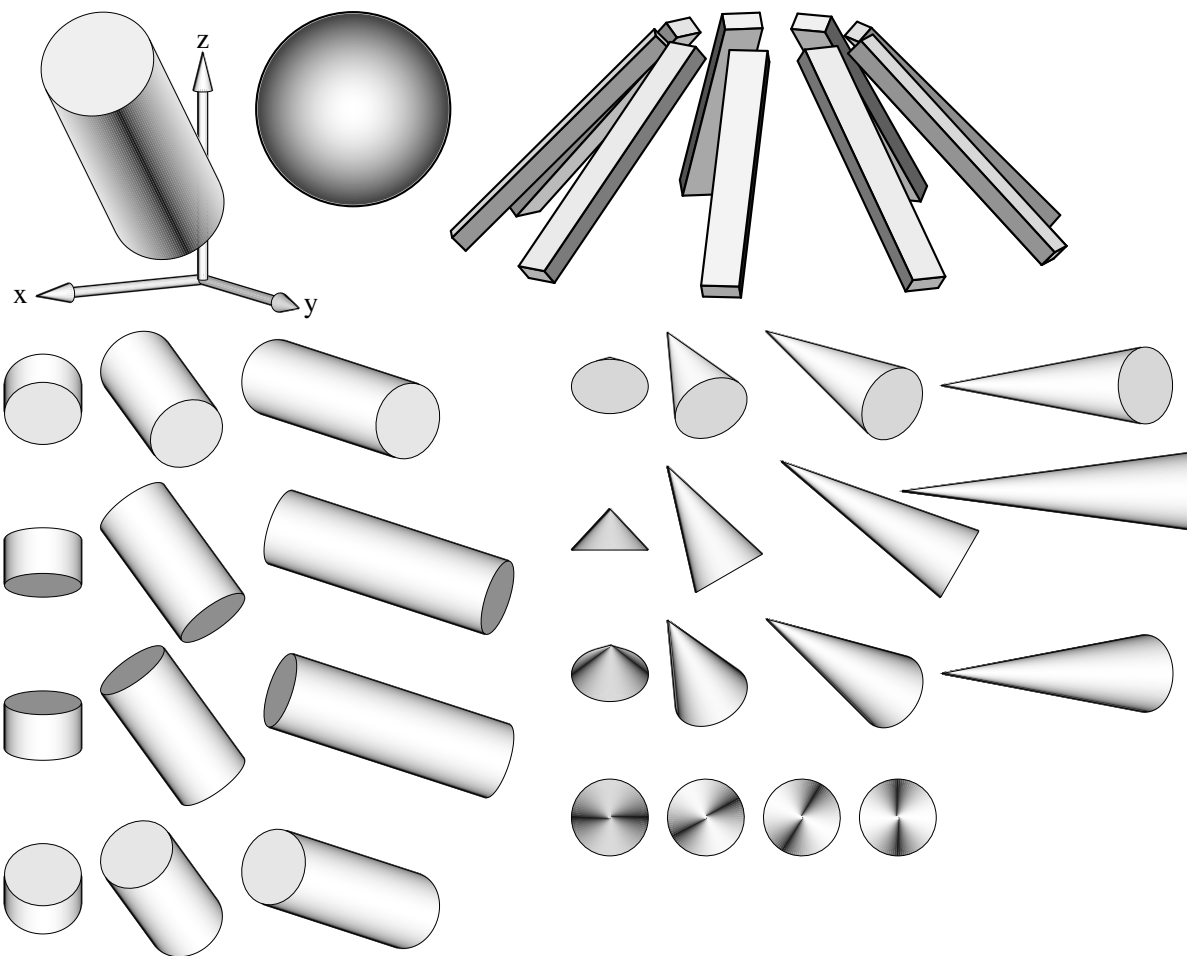


Figure 87: Basic shapes [shapes.m4].

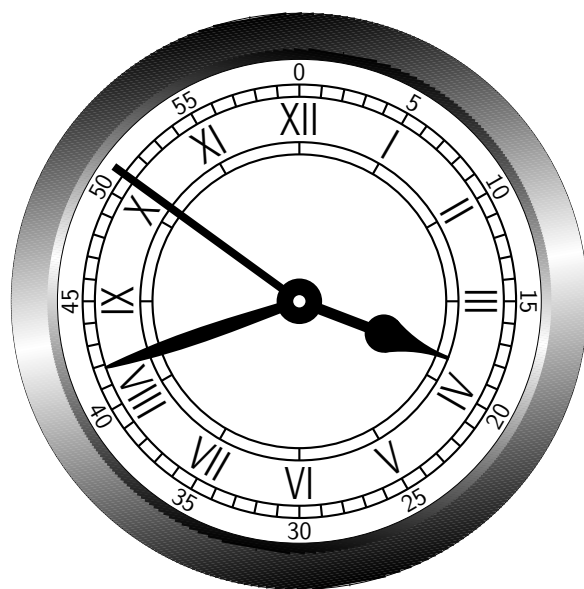


Figure 88: An antique clock face [AntiqueClock.m4].



Figure 89: Conestoga Sailing Club (illustrating the filling of arbitrary shapes) [csc.m4].

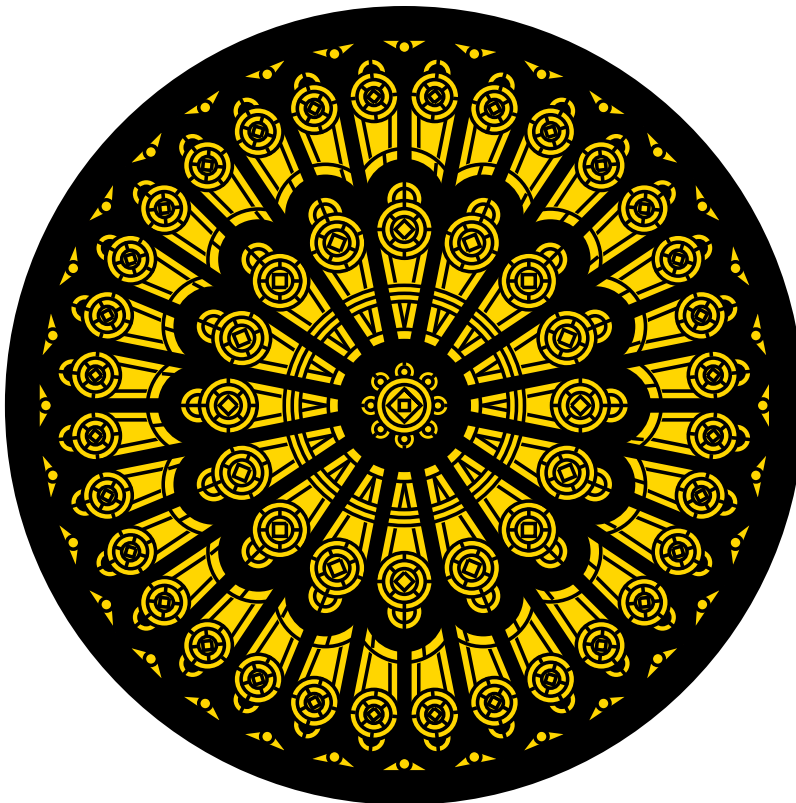


Figure 90: Redrawn from a detail of the set design for the musical *Dracula*, used for testing `dpic`. This diagram consumes much \LaTeX main memory but can be produced directly as pdf using `dpic -d`, as svg using `dpic -g`, or as postscript using `dpic -r` since no text formatting is required [rose.m4].

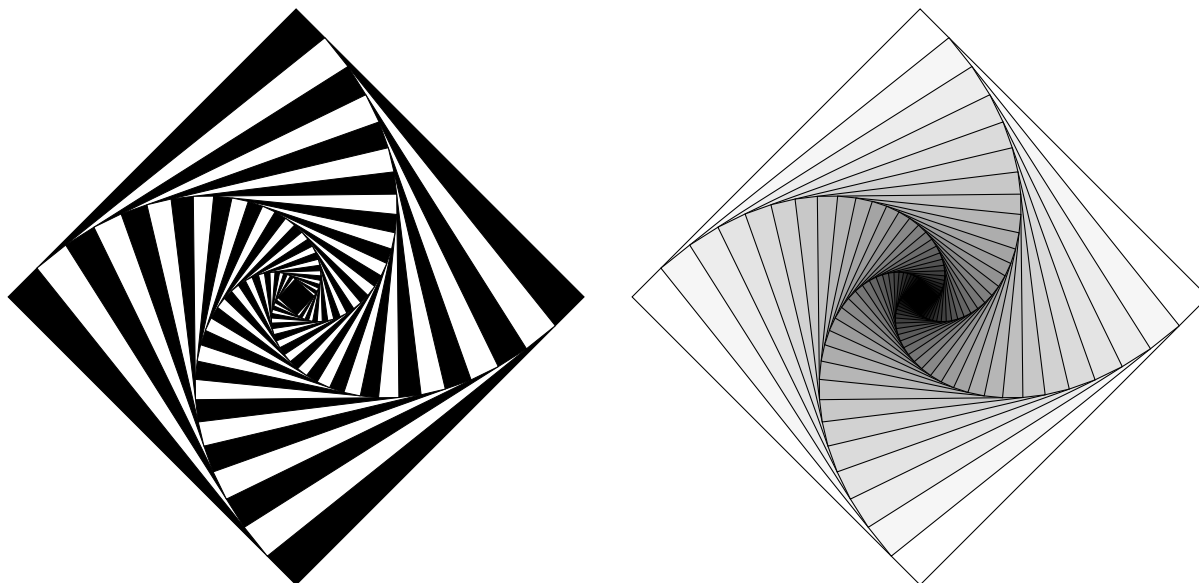


Figure 91: Variations on M. Goossens, S. Rahtz, and F. Mittelbach, *The L^AT_EX Graphics Companion*, Addison-Wesley 1997, pp. 57-58 [diamond.m4].

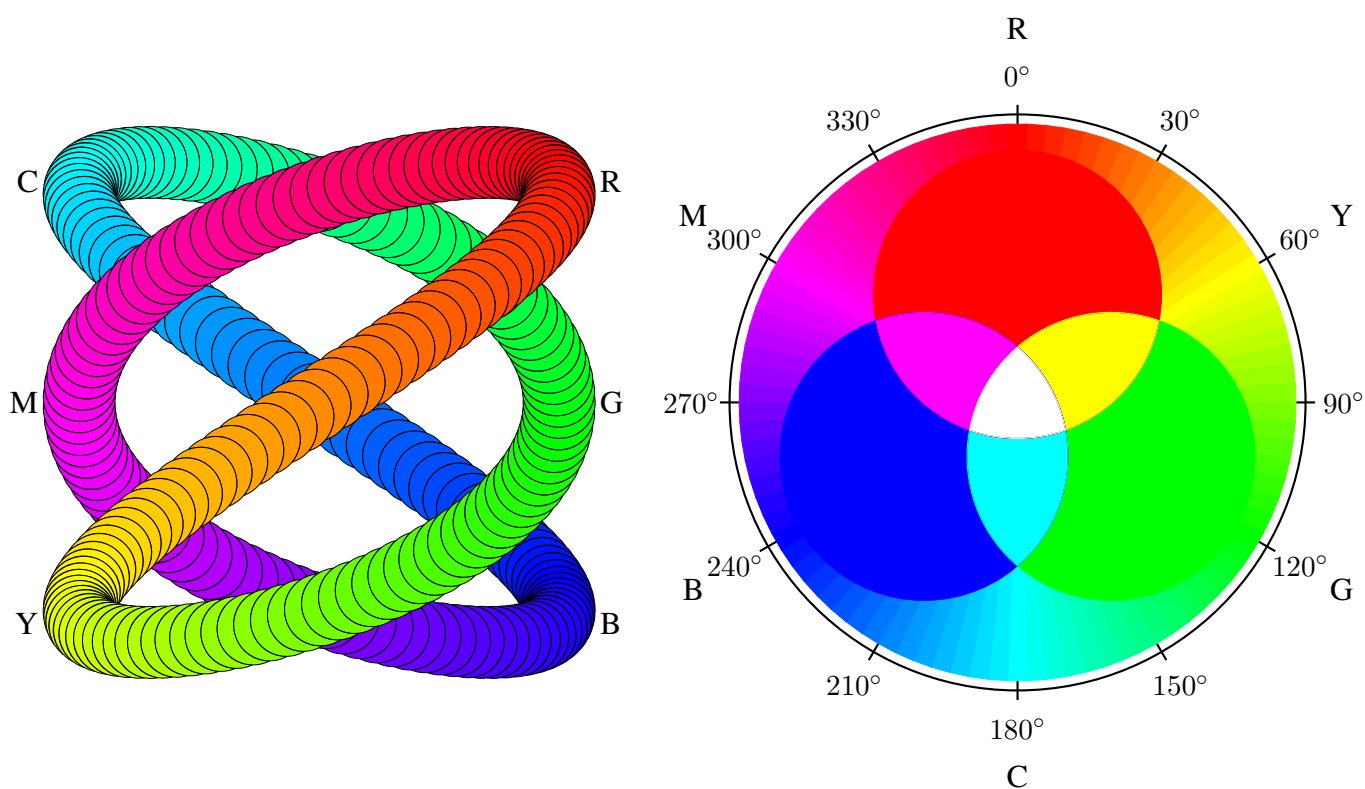


Figure 92: An exercise in calculating RGB colours [worm.m4].

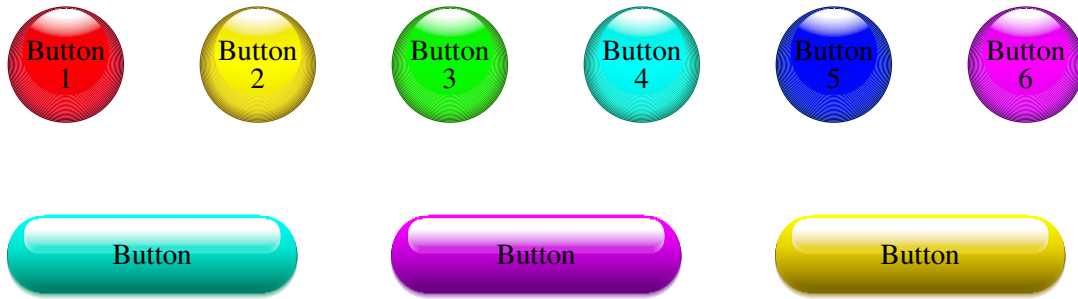


Figure 93: Shading in color [Buttons.m4].

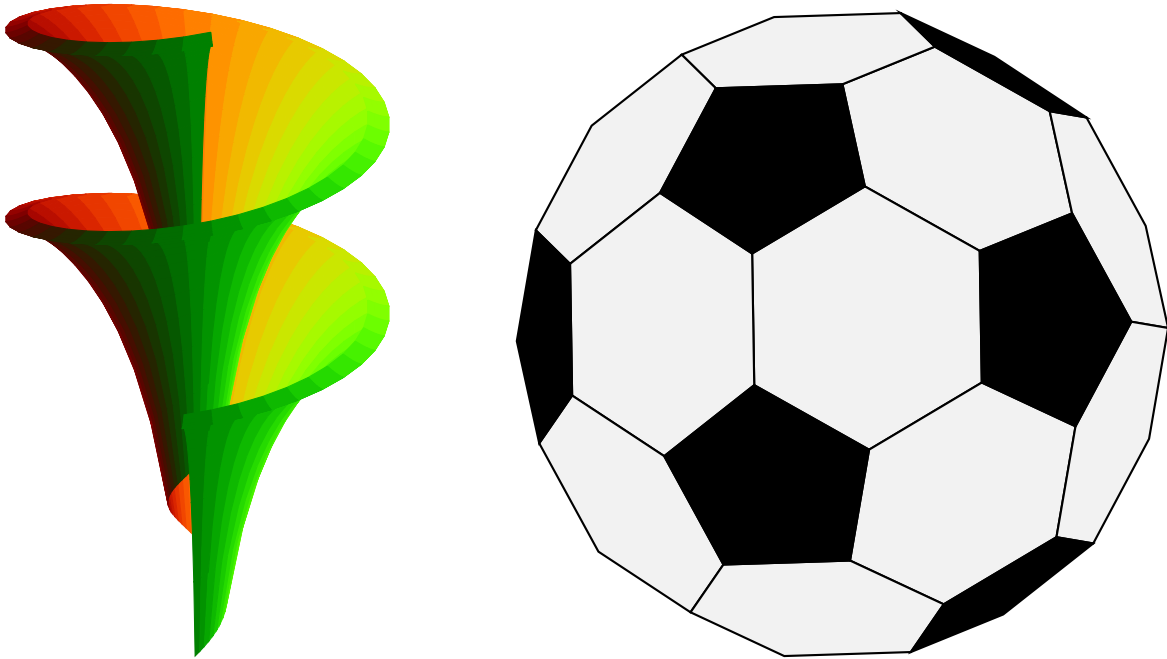


Figure 94: Dini surface and an icosahedron [Dini.m4].

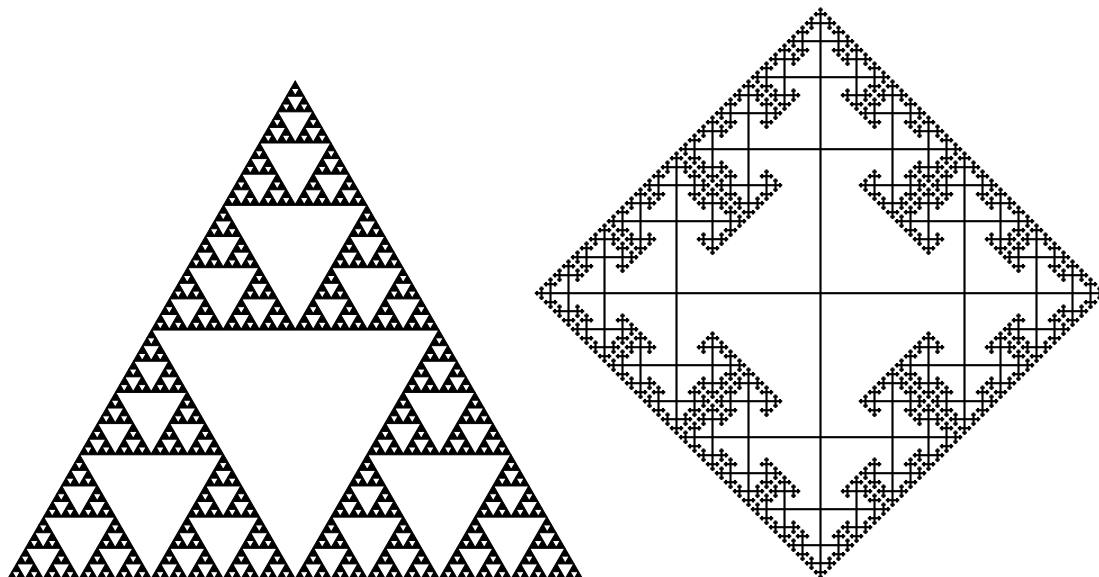


Figure 95: The Sierpinski triangle and a Cayley graph: tests of pic macro recursion [Sierpinski.m4].

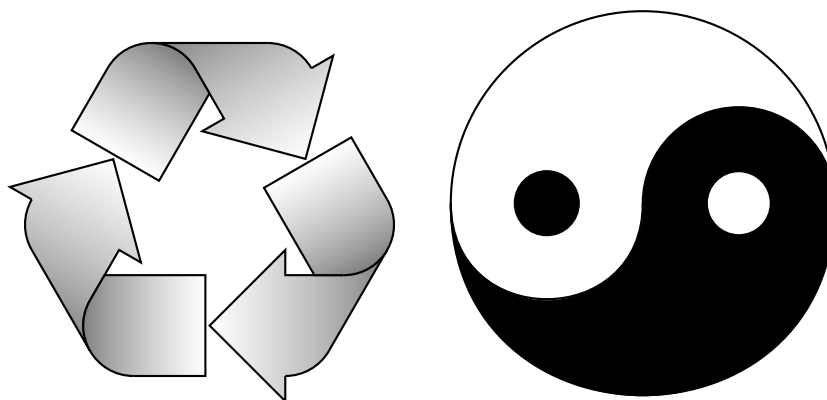


Figure 96: Modest repetition and partial fill [recycle.m4].

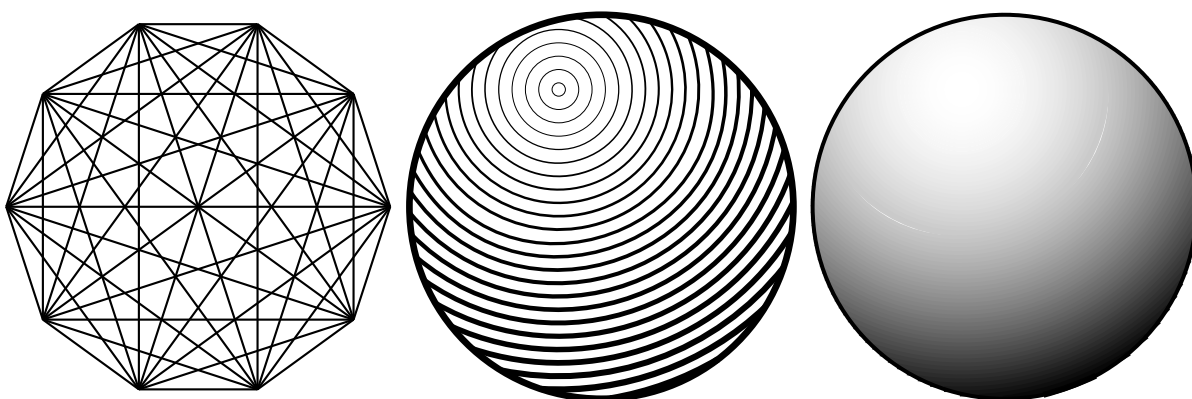


Figure 97: Simple diagrams that are easily drawn by looping [ex15.m4].

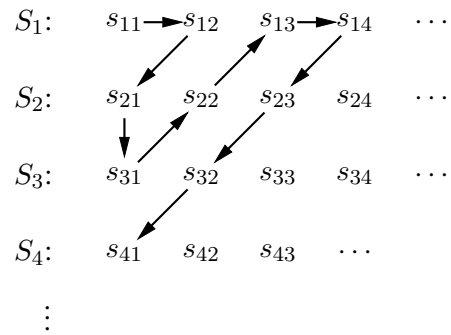


Figure 98: An example of enumeration [Counting.m4].

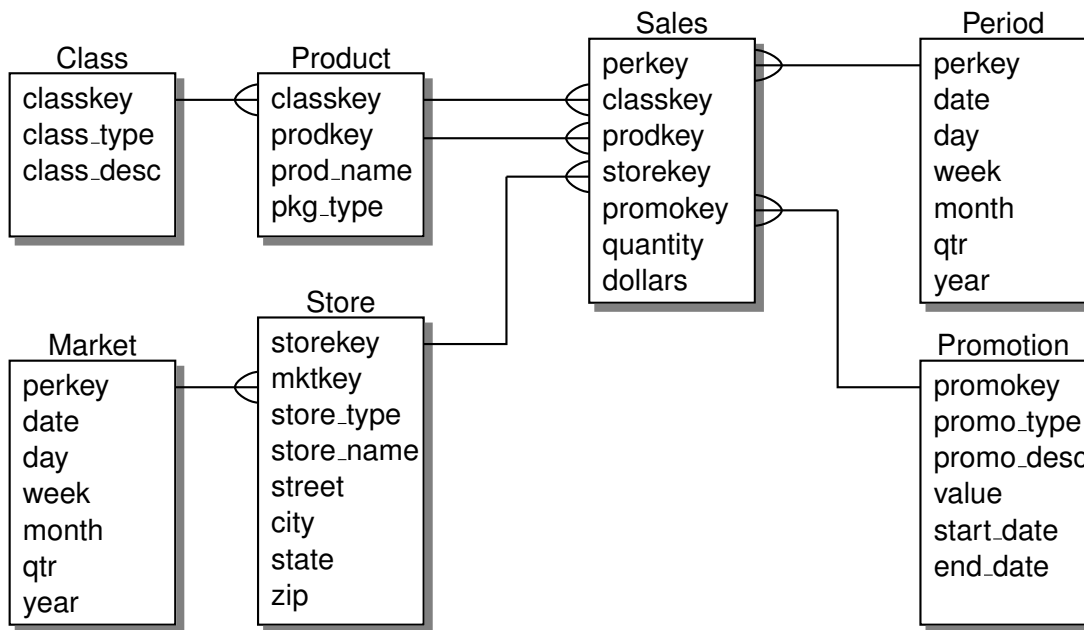


Figure 99: Illustrating shadebox and a custom crowfoot line termination [Crow.m4].

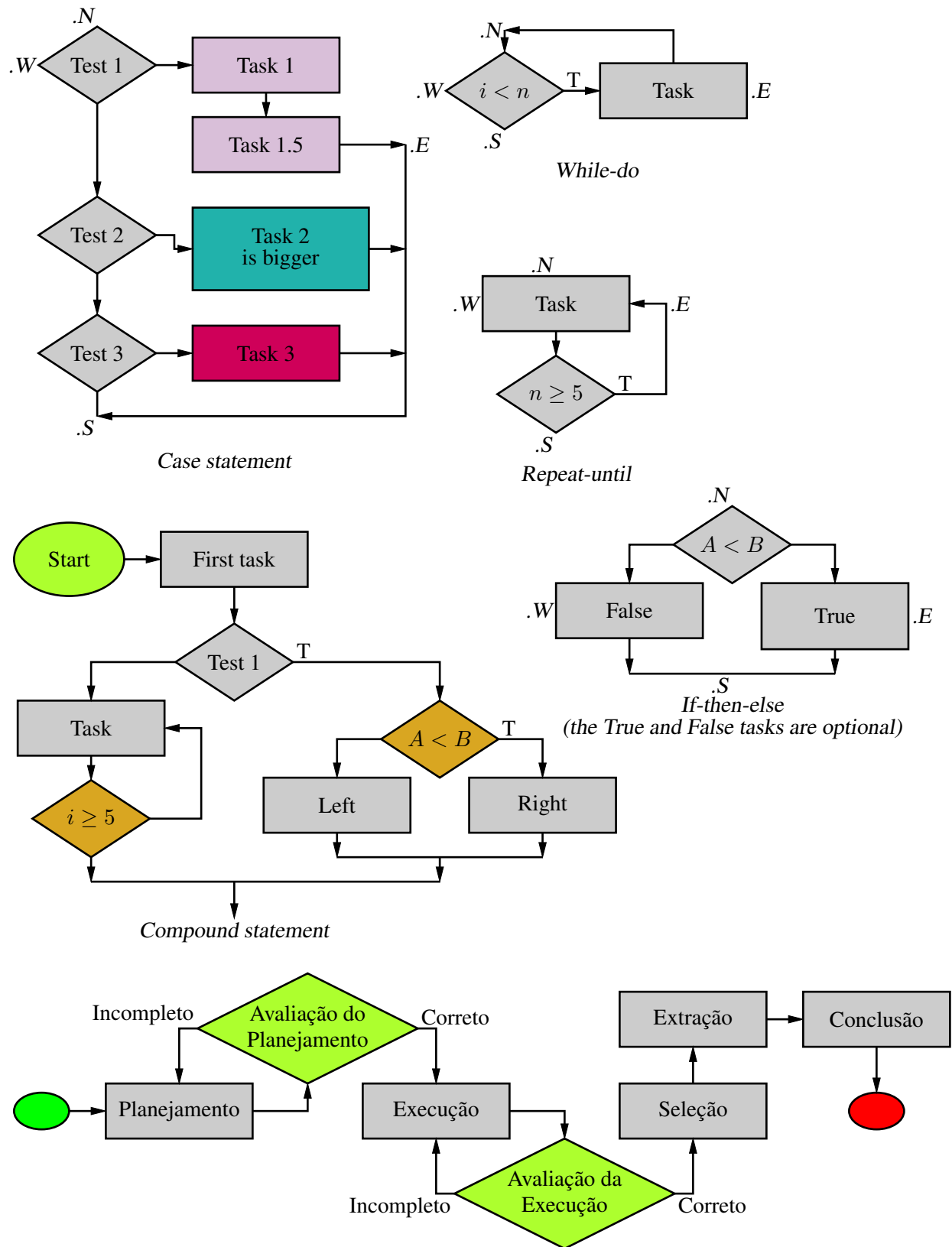


Figure 100: A flowchart sampler [Flow.m4].

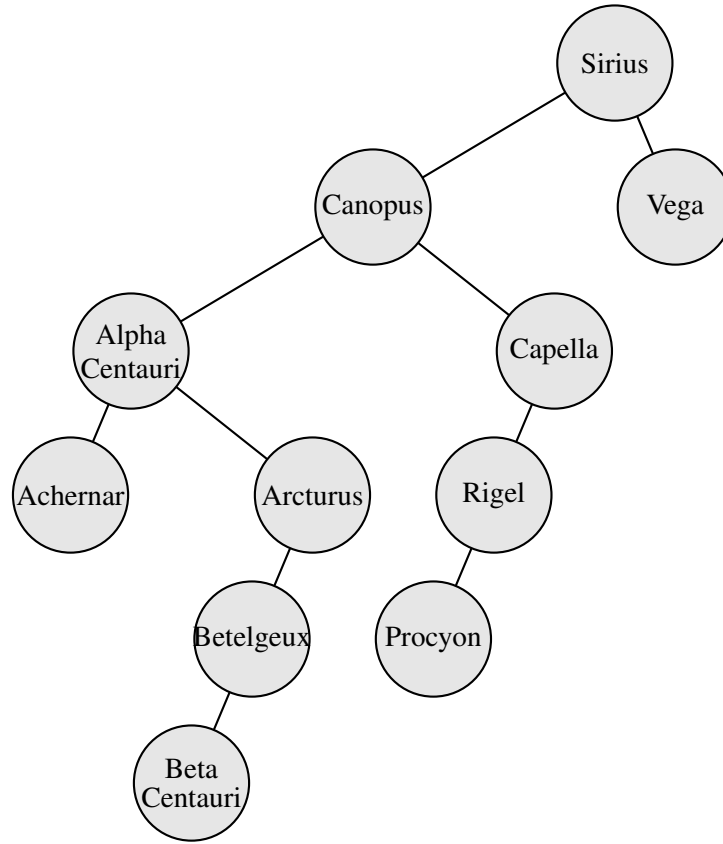


Figure 101: A binary tree [Btree.m4].

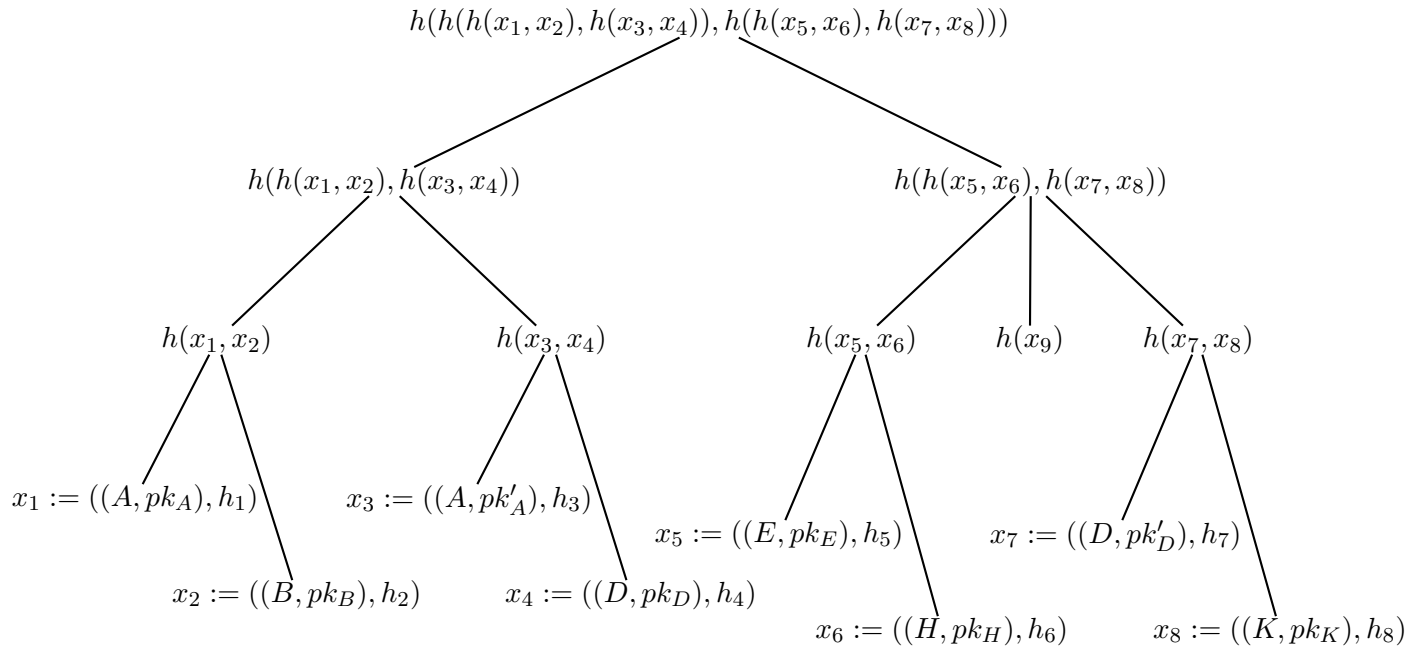


Figure 102: Another tree [Ttree.m4].



Figure 103: Overlaying a figure with line graphics [Incleps.m4].