



Trigon theme

A modern, elegant and versatile
theme for Beamer

Thomas Lambert

March 25, 2021

Overview



1. Introduction

2. Layout

3. Elements

4. Conclusion

The background consists of two large, overlapping geometric shapes. A teal-colored shape is in the upper-left corner, and a light gray shape is in the lower-left corner. They meet at a diagonal line that runs from the top-left towards the bottom-right. The rest of the background is white.

Introduction

Introduction

A short introduction to Trigon



TRIGON is a modern, elegant and versatile theme for Beamer, inspired by the METROPOLIS theme from Matthias Vogelgesang.

TRIGON comes with lots of nice extra features

- ▶ Multiple style variations for title, section and normal slides
- ▶ Simple customization of theme colors
- ▶ Lots of convenient options to tweak the design



Layout

Layout

Layout variations



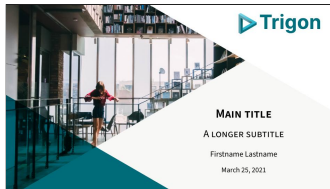
The general style for the title, section and regular frames can be changed easily with simple options. Here are some examples for the title page



plain



style1



style2 (default)

Layout

Fonts



This theme is using *Source Sans Pro* font for all elements by default. This can be disabled by providing the option `usesourcefonts=false`.

Emphasis can be added by using **bold** typeface, *italic*, **alert** or **simple colors**.

Equations are typesetted with this font as well

$$F(x|\mu, s) = \int_{-\infty}^x s^{-1} \left(1 + e^{-\frac{v-\mu}{s}} \right)^{-2} e^{-\frac{v-\mu}{s}} dv = \frac{1}{1 + e^{-\frac{x-\mu}{s}}}$$



Elements

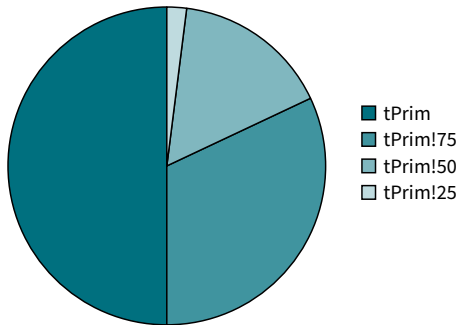
Elements

Charts



Use the theme color `tPrim`, `tSec`, `tGrey` and `tAccent` to have charts directly fit the main theme of presentation.

- ▶ Easy variants using `color!x` to lighten or darken the colors



Elements

Lists



Items

- ▶ Item 1
 - ▶ Subitem 1
 - ▶ Subitem 2
- ▶ Item 2
- ▶ Item 3

Enumerations

1. The Fellowship of the Ring,
2. The Two Towers,
3. The Return of the King.

Descriptions

Trigon Modern.
Default Outdated.

Elements

Figures

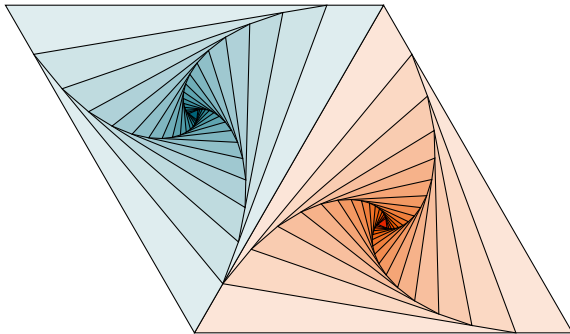


Figure 2: Rotated triangles from texample.net.

Elements

Tables



Table 1: A nice table example

| | Velocity | Angle | Vertical force |
|---------------|-----------------|--------------|-----------------------|
| | U | α | F_z |
| | [m/s] | [°] | [N] |
| 2D simulation | 9 | 2 | 9.23 |
| 3D simulation | 10.0 | 3 | 15.039 |
| Experiment A | 11.31 | 2.5 | 13.2 |
| Experiment B | 11.26 | 2.7 | 12.6 |
| Experiment C | 11.33 | 2.47 | 13.6 |

Elements

Blocks



Regular block

Just a regular block

Alert block

Some important thing

Example block

No difference with regular block to avoid excessive distraction

Elements

Frame footer



TRIGON defines a custom beamer template to add a text to the footer. It can be set via

```
\setbeamertemplate{frame footer}{My custom footer}
```

References



Some references to showcase `[allowframebreaks]` [4, 2, 5, 1, 3]

The background of the slide is composed of three geometric sections. A teal-colored triangle is in the top-left corner. A light gray triangle is in the bottom-left corner. The remaining area is a white trapezoid. The word "Conclusion" is centered within the white area.

Conclusion

Summary



Get the source of this theme and the demo presentation from

`gitlab.com/thlamb/beamertheme-trigon`

As for METROPOLIS, **TRIGON** is licensed under a Creative Commons Attribution-ShareAlike 4.0 International License.



Backup slides



Sometimes, it is useful to add slides at the end of your presentation to refer to during audience questions.

The best way to do this is to include the `appendixnumberbeamer` package in your preamble and call `\appendix` before your backup slides.

TRIGON will automatically turn off slide numbering and progress bars for slides in the appendix.

References I



P. Erdős.

A selection of problems and results in combinatorics.

In *Recent trends in combinatorics* (Matrahaza, 1995), pages 1–6. Cambridge Univ. Press, Cambridge, 1995.



R. Graham, D. Knuth, and O. Patashnik.

Concrete mathematics.

Addison-Wesley, Reading, MA, 1989.



G. D. Greenwade.

The Comprehensive Tex Archive Network (CTAN).

TUGBoat, 14(3):342–351, 1993.

References II



D. Knuth.

Two notes on notation.

Amer. Math. Monthly, 99:403–422, 1992.



H. Simpson.

Proof of the Riemann Hypothesis.

preprint (2003), available at <http://www.math.drofnats.edu/riemann.ps>, 2003.