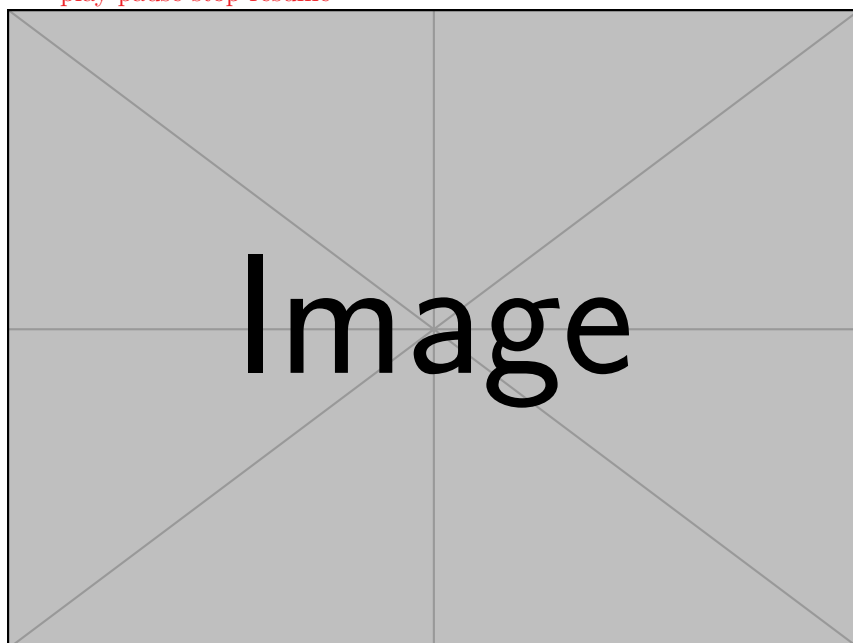


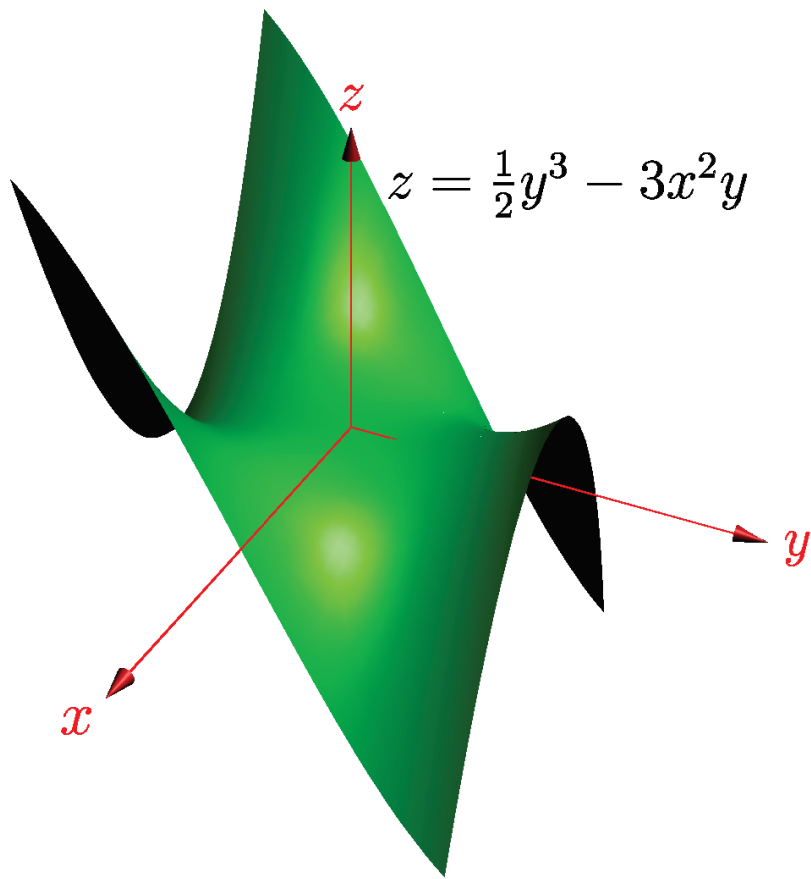
play pause stop resume

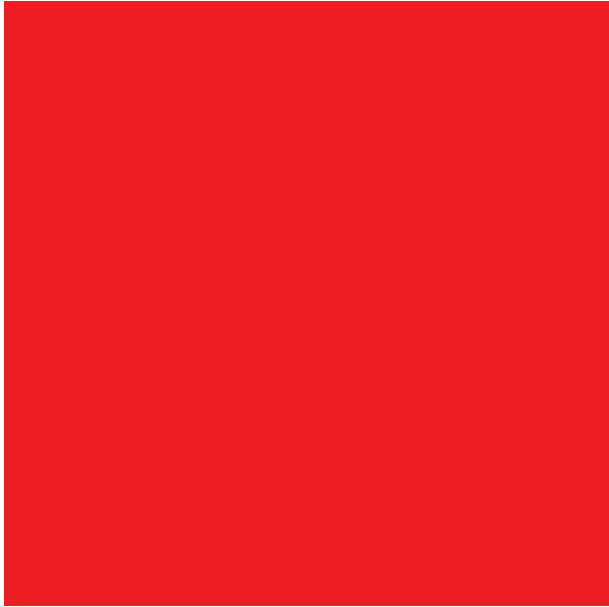


NEXT PAGE

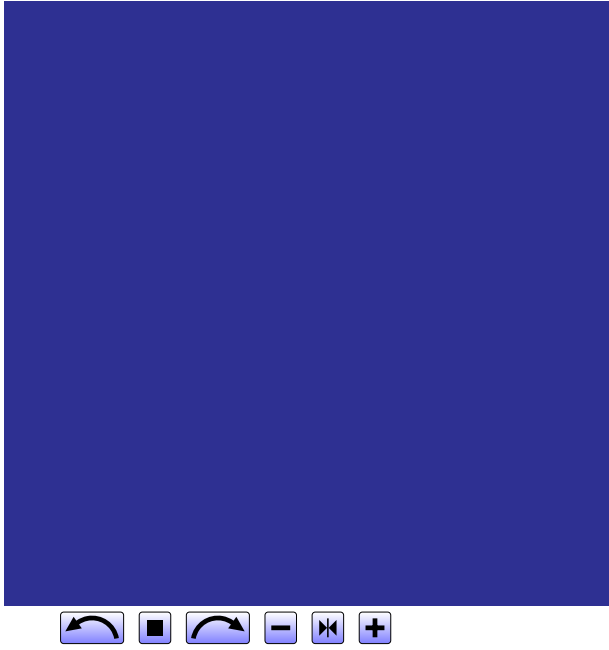
[Go to previous page \(with transition\).](#)

Turn by 10 degrees along x axis.
Turn by 30 degrees along x axis.
Turn by 90 degrees along x axis.





[Next view](#) [View “Back”](#) [6th view in the list](#)



Presentation

Transitions and durations

First slide

Some

First slide

Some
text

First slide

Some
text
to

First slide

Some
text
to
test

First slide

Some
text
to
test
slideshow

Second slide

more

Second slide

more
text

Third slide

More

slides

using

default transition

bye

default transition

bye

bye