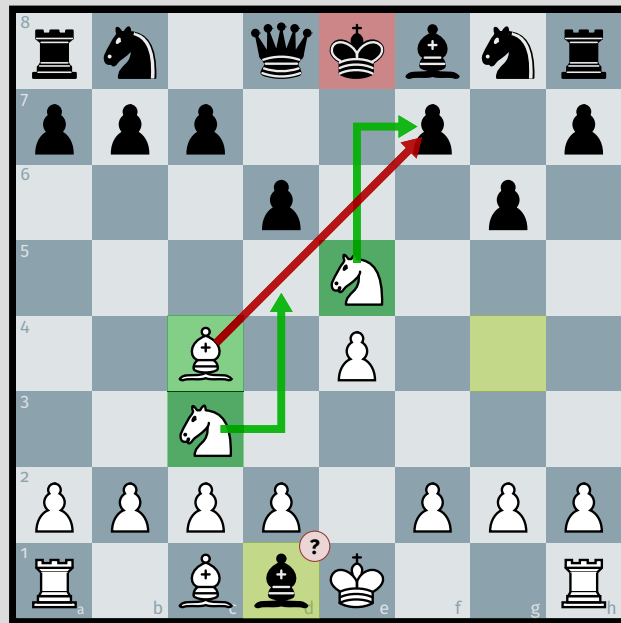


MPchess

drawing chess boards and positions with METAPOST



Contributor

Maxime CHUPIN

notezik@gmail.com

Version 0.1, 2023, March, 23th

<https://plmlab.math.cnrs.fr/mchupin/mpchess>

Abstract

This package allows you to draw chess boards and positions. The appearance of the drawings is modern and largely inspired by what is offered by the excellent web site [Lichess.org](https://lichess.org). Relying on METAPOST probably allows more graphic flexibility than the excellent \LaTeX packages.

<https://plmlab.math.cnrs.fr/mchupin/mpchess>

Contents

1	Installation	3
1.1	With \TeX live under Linux or MacOS	3
1.2	With Mik \TeX and Windows	4
1.3	Dependencies	4
1.4	Use with Lua \TeX and luamplib	4
2	Why this package and general philosophy	4
3	Board	5
3.1	Setting the size	5
3.2	Number of squares	6
3.3	Dimension of a square	6
3.4	Setting the color theme	6
3.4.1	Predefined themes	6
3.4.2	Configuration of a personal theme	7
3.5	Display coordinates	8
3.6	White or black side	9
3.7	Players' names	9
4	Pieces et positions	10
4.1	Setting the theme of the pieces	10
4.2	Who's to move	11
4.3	Draw position	11
4.4	Build a position	12
4.4.1	Initialization	12
4.4.2	Adding pieces	12
4.4.3	Delete piece	13
4.5	Reading data in FEN format	14
4.6	Reading data in PGN format	14
4.6.1	Show last move	15
4.6.2	Get the number of moves	16
5	Annotation	16
5.1	Arrows	16
5.2	Coloring squares	18
5.3	Circles	19
5.4	Crosses	19
5.5	Move comments	20

6	Miscellaneous	21
6.1	Reset the chessboard	21
6.2	Global reset	21
6.3	Clip the board	21
7	To do	22
8	Complete example	23

This package is in beta version, do not hesitate to report bugs, as well as requests for improvement.

1 Installation

MPchess is on the CTAN and can be installed via the package manager of your distribution.

<https://www.ctan.org/pkg/mpchess>

1.1 With T_EXlive under Linux or MacOS

To install MPchess with T_EXlive, you will have to create the directory texmf directory in your home.

```
user $> mkdir ~/texmf
```

Then, you will have to place the .mp files in the

~/texmf/tex/metapost/mpchess/

MPchess consists of 7 files METAPOST :

- mpchess.mp;
- mpchess-chessboard.mp;
- mpchess-pgn.mp;
- mpchess-fen.mp;
- mpchess-cburnett.mp;
- mpchess-staunty.mp;
- mpchess-skak.mp.

Once this is done, MPchess will be loaded with the classic

```
input mpchess
```

1.2 With MikTeX and Windows

These two systems are unknown to the author of *MPchess*, so we refer to their documentation to add local packages:

<http://docs.miktex.org/manual/localadditions.html>

1.3 Dependencies

MPchess depends on the packages METAPOST: *hatching* and, if *MPchess* is not used with Lua \TeX and *luamplib*, *latexmp*.

1.4 Use with Lua \TeX and *luamplib*

It is possible to use *MPchess* directly in a \TeX file with Lua \TeX and the package *luamplib*. This is what is done to write this documentation.

For certain functionalities, *MPchess* uses the METAPOST operator *infont*. Thus, in order for the content of these features to be composed in the current font of the document, one must add the command :

```
\mplibtexttextlabel{enable}
```

For more details on these mechanisms, we refer to the documentation of the package *luamplib* [3].

2 Why this package and general philosophy

There are already \TeX packages for drawing chess boards and positions, including the very good *xskak* [2] coupled with the package *chessboard* [1]. Ulrike Fisher has done there improvement, maintenance work, and provided us with excellent tools to make chess diagrams and to handle the different formats of game descriptions¹. The documentations of these packages are very good.

Several things motivated the creation of *MPchess*. First of all, with *chessboard* the addition of a set of pieces is not very easy, because it relies on fonts. Moreover, I find that drawing chess game diagrams is something diagrams is a very graphical thing, and that using a dedicated drawing language offers more flexibility and what better than METAPOST [4].

With *MPchess*, we build the final image of the chess board with the pieces by successive layers. Thus, we begin by producing and drawing the board (*backboard*), which we can modify by coloring some squares for example, then we will add the pieces of the position (*chessboard*), and finally, we can annotate the whole with marks, colors, arrows, etc.

Moreover, *MPchess* produces images that are graphically close to what can be provided by excellent *open source* website <https://lichess.org>. You will see that the colors, the pieces and the general aspect are largely inspired of what this website offers.

¹She even developed the package to handle various chess fonts.

3 Board

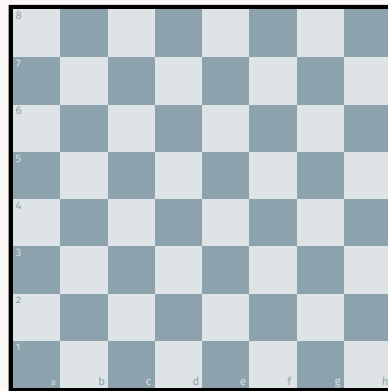
The board is called with MPchess `backboard`. You have to initialize the board before drawing it. This is done with the following command:

`init_backboard`

This command constructs a METAPOST `picture` named `backboard`. It should then be drawn as illustrated in the following example.

Example 1

```
input mpchess
beginfig(0);
init_backboard;
draw backboard;
endfig;
```



This initialization will make it possible to take into account the various options and features that we will describe in the following.

3.1 Setting the size

When creating the `backboard`, you can decide on the width of it. This is done with the following command:

`set_backboard_width(<dim>)`

<dim>: is the width of the board (with units). By default, this dimension is 5 cm.

The use of this command is illustrated in the example 2. This command should be used before `init_backboard` so that it is taken into account when creating the `picture`.

The size of the board can be retrieved with the following command:

`get_backboard_width`

This command returns a `numeric`.

3.2 Number of squares

By default, the game board contains 64 squares (8×8). You can change this with the following command:

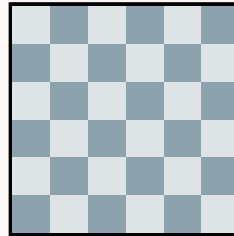
```
set_backboard_size(<nbr>)
```

<nbr>: is the desired number of squares. The board will then be square of size **<nbr>**×**<nbr>**. By default this number is 8.

Again, this command must be used before `init_backboard` for it to be taken into account as shown in the following example.

Exemple 2

```
input mpchess  
  
beginfig(0);  
set_backboard_width(3cm);  
set_backboard_size(6);  
init_backboard;  
draw backboard;  
endfig;
```



To obtain the size of the game board, you can use the following command the following command

```
get_backboard_size
```

This command returns a **numeric**.

3.3 Dimension of a square

Depending on the number of squares on the board and the prescribed width of the board, MPchess calculates the dimension (width or height) of a square. This serves as a general unit. To obtain it, use the following command.

```
get_square_dim
```

This command returns a **numeric**.

3.4 Setting the color theme

3.4.1 Predefined themes

Several color themes are available. To choose a color theme, use the following command:

```
set_color_theme(<string>)
```

<string> can be:

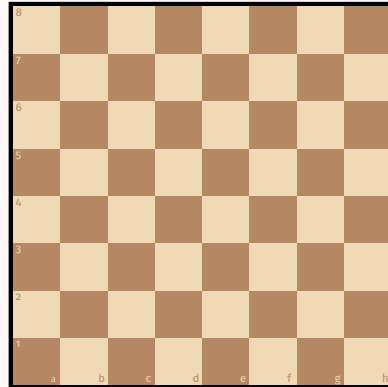
- "BlueLichess" (thème par défaut);

- "BrownLichess";
- or "Classical".

The following examples show the results obtained.

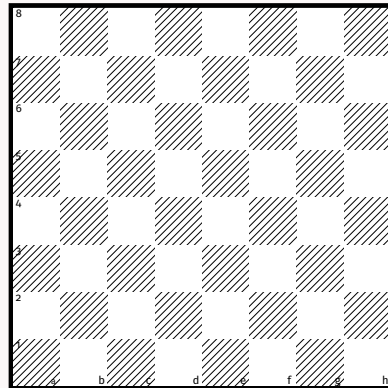
Exemple 3

```
input mpchess
beginfig(0);
set_color_theme("BrownLichess
");
init_backboard;
draw backboard;
endfig;
```



Exemple 4

```
input mpchess
beginfig(0);
set_color_theme("Classical");
init_backboard;
draw backboard;
endfig;
```



The two color themes provided borrow the colors of the Lichess themes.

3.4.2 Configuration of a personal theme

A color theme is really just the definition of two colors. These can be defined with the following commands.

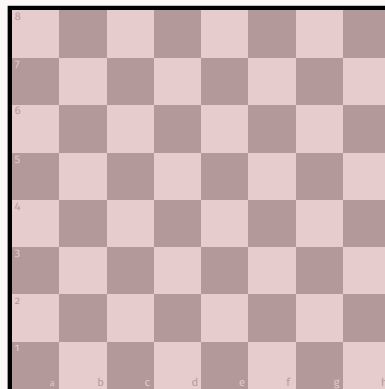
```
set_white_color(<color>)
```

```
set_black_color(<color>)
```

<color> is a METAPOST **color**.

Exemple 5

```
input mpchess
beginfig(0);
set_white_color((0.9,0.8,0.8)
);
set_black_color((0.7,0.6,0.6)
);
init_backboard;
draw backboard;
endfig;
```



3.5 Display coordinates

You may have noticed in the various examples that by default, the coordinates are, as on the Lichess site, written in small letters inside the boxes.

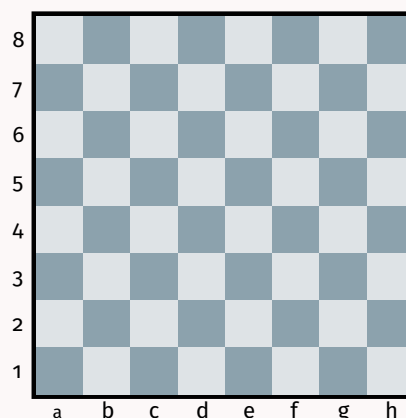
MPchess allows to position these coordinates outside the board with the following command.

`set_coords_outside`

The result is as follows.

Exemple 6

```
input mpchess
beginfig(0);
set_coords_outside;
init_backboard;
draw backboard;
endfig;
```



There is also a command to position the coordinates inside the board.

`set_coords_inside`

You can see in this documentation that with `luamplib` and \LaTeX , the font is the font of the current document. To draw these letters and these numbers, MPchess uses the METAPOST operator `infont` and the font is set to `defaultfont` by default², so it is not possible to modify the composition font of the coordinates. This font can be changed with the following command.

²With `luamplib` the `infont` operator is redefined and its argument is simply ignored

`set_coords_font()`

It will then be necessary to use the naming conventions specific to the META-POST operator `infont` and we refer to the documentation [4] for more details. You can also delete the coordinates with the following command.

`set_no_coords`

And the reverse command also exists.

`set_coords`

3.6 White or black side

To choose if you want to see the tray on the white or black side, MPchess provides two commands.

`set_white_view`

`set_black_view`

By default, we see the board on the white side.

3.7 Players' names

You can fill in the names of the players so that they are noted around the chess-board. This is done with the following commands.

`set_white_player(<string>)`

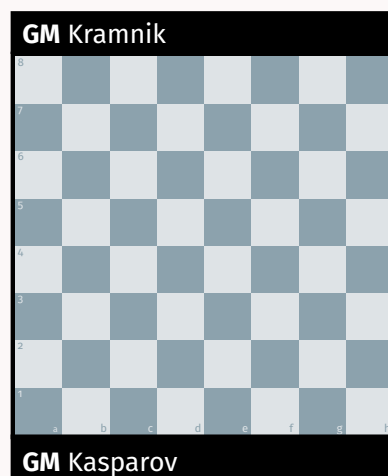
`set_black_player(<string>)`

<string>: is the string interpreted by \TeX to display.

Exemple 7

```
input mpchess
beginfig(0);
set_white_player("\textbf{GM}
    Kasparov");
set_black_player("\textbf{GM}
    Kramnik");

init_backboard;
draw backboard;
endfig;
```

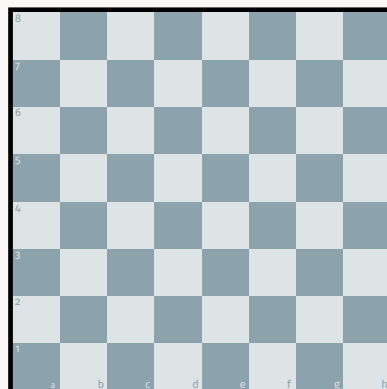


It is possible to place the names on the right side of the board without the black bands present by default. This happens either if the coordinates are printed outside the tray, or if the following command is used.

`set_players_side`

Exemple 8

```
input mpchess
beginfig(0);
set_white_player("\
    textbf{GM}
    Kasparov");
set_black_player("\
    textbf{GM}
    Kramnik");
set_players_side;
init_backboard;
draw backboard;
endfig;
```



GM Kramnik

GM Kasparov

4 Pieces et positions

MPchess, as described above, builds the picture of a chess position layer by layer. This part is dedicated to the configuration of pieces and positions.

Internally, MPchess builds a table on the board grid. Then, some macros allow to generate a **picture** to be drawn over the board (**backboard**).

4.1 Setting the theme of the pieces

MPchess provides for the moment three themes of pieces, two borrowed from Lichess, and the other borrowed from the package **skak** citectan-skak³.

To choose the theme we will use the following command.

`set_pieces_theme(<string>)`

<string>: can be:

- "**cburnett**" (default), to get the Lichess *cburnett* pieces set;
- "**staunty**", to get the Lichess *staunty* pieces set;
- "**skak**", to get the **skak** pieces set.

The table 1 shows the result of the three sets of pieces.

³Which provides the METAFONT code for a chess font, which has been easily adapted to METAPOST for MPchess.

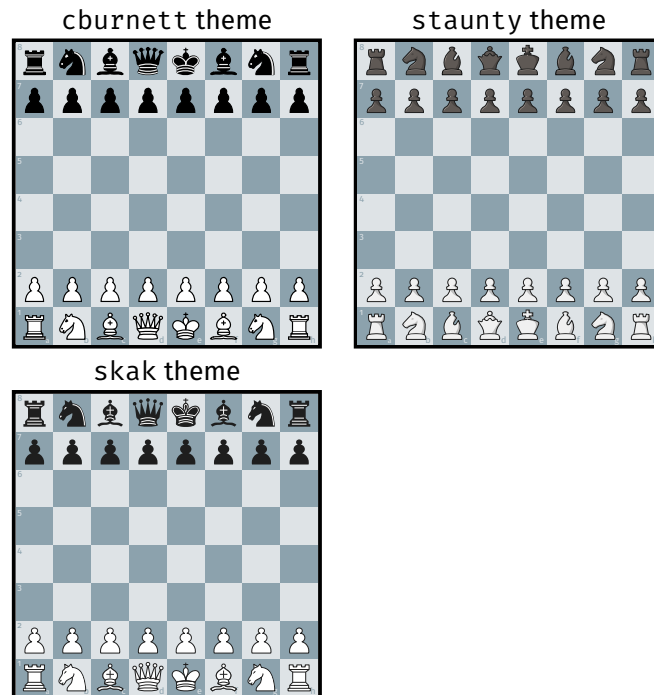


Table 1: The different themes of pieces provided by MPchess.

4.2 Who's to move

MPchess indicates who has the move between white and black. This is done by a small colored triangle (white or black) at the end of the board (which you can see in the following examples).

To specify who has to move we use the following commands.

`set_white_to_move`

`set_black_to_move`

By default, white has to move, and this information is displayed.

To activate or deactivate this display, use one of the following two commands.

`set_whos_to_move`

`unset_whos_to_move`

4.3 Draw position

The commands described below allow you to build a position in several ways (adding pieces one by one, reading a FEN file, etc.). Once a position has been constructed, it can be plotted using the following command which generates a METAPOST `picture`.

chessboard

The use of this command will be widely illustrated in the following examples.

4.4 Build a position

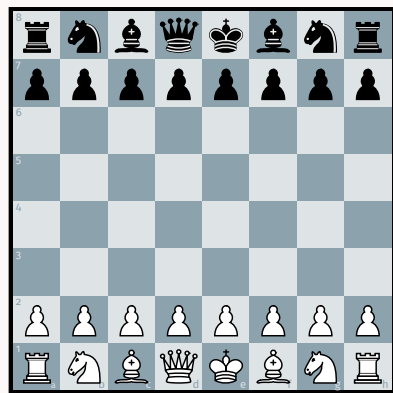
4.4.1 Initialization

To obtain the initial position of a game, simply use the following command.

init_chessboard

Example 9

```
input mpchess
beginfig(0);
init_backboard;
draw backboard;
init_chessboard;
draw chessboard;
endfig;
```



You can also initialize an empty `chessboard` with the following command.

set_empty_chessboard

4.4.2 Adding pieces

You can add pieces to build a position with the following two commands.

`add_white_pieces(<piece1>,<piece2>,etc.)`

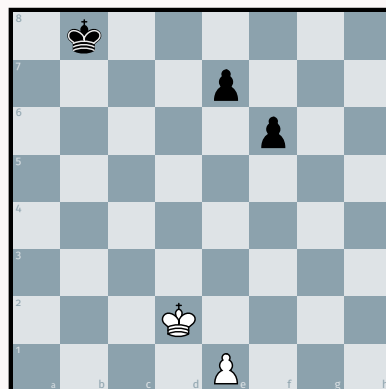
`add_black_pieces(<piece1>,<piece2>,etc.)`

These commands take lists of *<piece>* which are strings that describe the piece and the position using the algebraic notation. There is no limitation on the number of pieces in the list.

The following example illustrates the use of these commands.

Example 10

```
input mpchess
beginfig(0);
init_backboard;
draw backboard;
set_empty_chessboard;
add_white_pieces("e1", "Kd2");
add_black_pieces("e7", "f6", "
    Kb8");
draw chessboard;
endfig;
```



4.4.3 Delete piece

MPchess provides several commands to remove items from a position.

The first command allows you to delete an item from a square. This command takes a list of squares, using algebraic notation.

`clear_squares(<square1>,<square2>,etc.)`

The **<square1>**, **<square2>**, etc., are strings, for example "a3".

The following command allows to delete a set of squares in a region determined by two coordinates on the board. This command allows to take a list of regions.

`clear_areas(<area1>,<area2>,etc.)`

The **<area1>**, **<area2>**, etc., are strings consisting of two coordinates separated by a dash, for example "a3-g7".

The following command deletes all the cells in a file (column) determined by a letter on the board. This command allows to take a list of files.

`clear_files(<file1>,<file2>,etc.)`

The **<file1>**, **<file2>**, etc., are strings of characters consisting of a letter, for example "a".

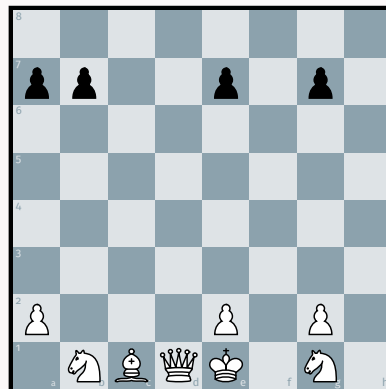
The following command deletes all the cells in a rank (line) determined by a number on the board. This command allows to take a list of ranks.

`clear_ranks(<rank1>,<rank2>,etc.)`

The **<rank1>**, **<rank2>**, etc., are strings made up of a number, for example "4". The use of all these commands is illustrated in the following example.

Exemple 11

```
input mpchess
beginfig(0);
init_backboard;
draw backboard;
init_chessboard;
clear_squares("a1","b2");
clear_areas("c2-d7");
clear_files("f","h");
clear_ranks("8");
draw chessboard;
endfig;
```



4.5 Reading data in FEN format

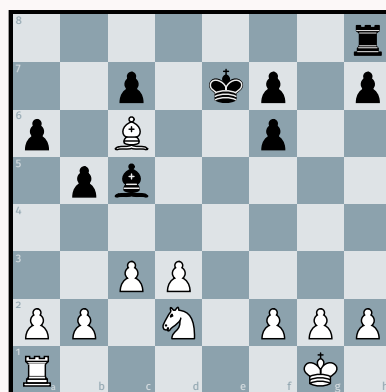
MPchess allows you to read a position in the FEN format thanks to the following command.

`build_chessboard_from_fen(<string>)`

<string>: is a string describing a position in FEN format. Note that all information after the w or b character is ignored.

Exemple 12

```
input mpchess;
beginfig(0);
init_backboard;
draw backboard;
string fenstr;
fenstr := "7r/2p1kp1p/p1B2p
2/1pb5/8/2PP4/PP1N1PPP/
R5K1 b - - 2 19";
build_chessboard_from_fen(
fenstr);
draw chessboard;
endfig;
```



4.6 Reading data in PGN format

MPchess also makes it possible to read a string in the PGN format. When such a functionality is used, MPchess stores all the intermediate positions and thus allows to represent them.

To construct the positions, we use the following command.

`build_chessboards_from_pgn(<string>)`

The PGN format accepted is a simplified one which does not accept variants or comments.

Once the positions are built, we can represent them with the following command.

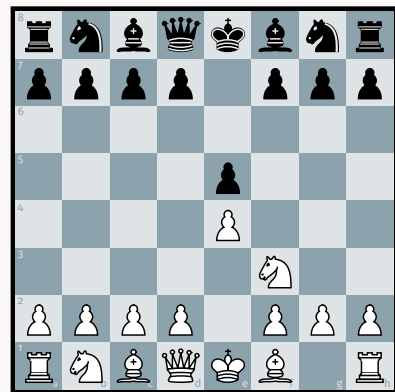
`chessboard_step(<int>)`

<int>: is the number of the step. The initial configuration is numbered 0, and then each move, white or black, is numbered.

This command, like `chessboard` (see page 12), returns a **picture**. The following example illustrates the use of these commands.

Example 13

```
input mpchess;
string pgnstr;
pgnstr := "1. e4 e5 2. Nf3 Nc
        6 3. Nxe5 Nxe5 4. Bb5 c
        6";
build_chessboards_from_pgn(
    pgnstr);
beginfig(0);
init_backboard;
draw backboard;
draw chessboard_step(3); % Nf
    3
endfig;
```



4.6.1 Show last move

The last move can be displayed automatically with the following command.

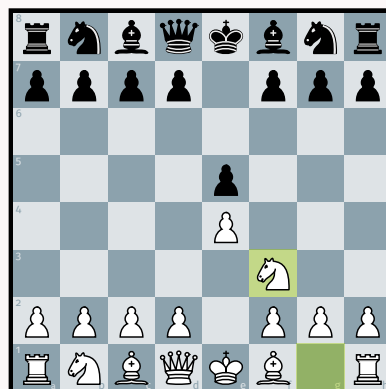
`show_last_move(<int>)`

<int>: is the number of the step. The initial setup is numbered 0, and then each move, white or black, is numbered.

This command colors in transparency the two squares where the last move starts and ends. Thus, it must be used between the drawing of the board (`draw backboard`) and the drawing of the pieces (`draw chessboard_step(i)`).

Exemple 14

```
input mpchess;  
string pgnstr;  
pgnstr := "1. e4 e5 2. Nf3 Nc  
6 3. Nxe5 Nxe5 4. Bb5 c  
6";  
build_chessboards_from_pgn(  
    pgnstr);  
beginfig(0);  
init_backboard;  
draw backboard;  
show_last_move(3);  
draw chessboard_step(3); % Nf  
3  
endfig;
```



You can configure the color used to color the squares of the last move with the following command.

`set_last_move_color(<color>)`

`<color>`: is a METAPOST `color`.

4.6.2 Get the number of moves

You can get the number of half moves with the following command.

`get_halfmove_number`

This command returns a `numeric`.

You can also get the total number of moves in the sense that they are numbered in the PGN format, with the following command:

`get_totalmove_number`

This command returns a `numeric`.

5 Annotation

Numerous commands allow to annotate the chessboard (arrow, color, circle, cross, etc.).

5.1 Arrows

The command for drawing arrows on the chessboard is the following.

`draw_arrows(<color>)(<string1>,<string2>, etc.)`

`<color>`: is a METAPOST `color`.

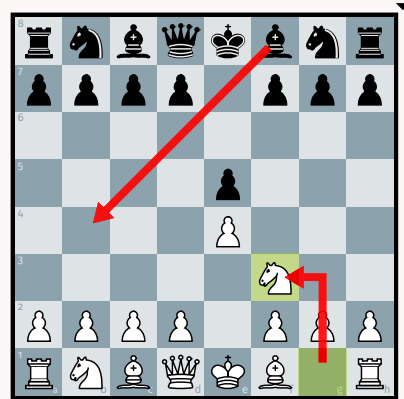
<string1>: is a string (between double-quotes) consisting of two coordinates (letter and number) separated by two characters which can be

- to connect the two squares in a straight line;
- to connect the two squares in a broken line, first horizontally then vertically;
- └ to connect the two squares in a broken line, first vertically then horizontally.

The following example illustrates the use of this command.

Exemple 15

```
input mpchess;
string pgnstr;
pgnstr := "1. e4 e5 2. Nf3 Nc
6 3. Nxe5 Nxe5 4. Bb5 c
6";
build_chessboards_from_pgn(
    pgnstr);
beginfig(0);
init_backboard;
draw backboard;
show_last_move(3);
draw chessboard_step(3); % Nf
3
draw_arrows(red)("f8--b4", "g
1|-f3");
endfig;
```



The thickness of the arrows can be changed with the following command.

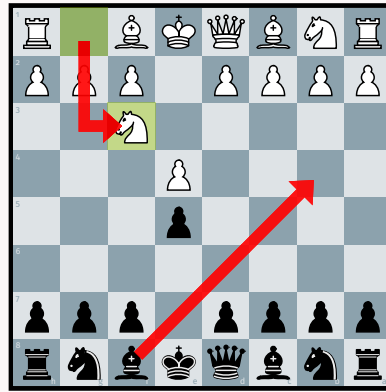
set_arrow_width(<coeff>)

<coeff>: is a coefficient (**numeric**) which allows you to adjust the width of the arrows in proportion to the width of a square on the chessboard. By default, this coefficient is 0.08.

The following example illustrates the use of this command.

Exemple 16

```
input mpchess;
string pgnstr;
pgnstr := "1. e4 e5 2. Nf3 Nc
        6 3. Nxe5 Nxe5 4. Bb5 c
        6";
build_chessboards_from_pgn(
    pgnstr);
beginfig(0);
set_black_view;
init_backboard;
draw backboard;
show_last_move(3);
draw chessboard_step(3); % Nf
    3
set_arrow_width(0.12);
draw_arrows(red)("f8--b4", "g
    1|-f3");
endfig;
```



5.2 Coloring squares

MPchess also allows you to color squares with the following command.

`color_square(<color>)(<coord1>,<coord2>, etc.)`

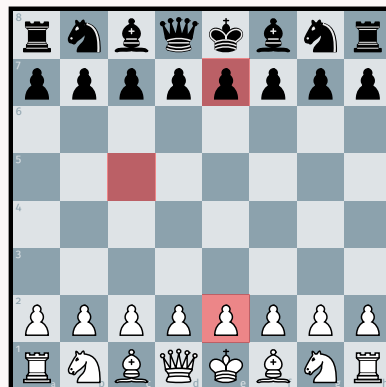
<color>: is a METAPOST `color`.

<coord1>: is a string (between double quotes) consisting of two coordinates (letter and number).

The following example illustrates the use of this command.

Exemple 17

```
input mpchess
beginfig(0);
init_backboard;
draw backboard;
color_square(red)("e2", "e7", "
    c5");
init_chessboard;
draw chessboard;
endfig;
```



This command colors the squares with a certain transparency to fit to the white and black squares.

5.3 Circles

MPchess allows you to surround squares with circles using the following command below.

`draw_circles(<color>)(<coord1>,<coord2>, etc.)`

<color>: is a METAPOST `color`.

<coord1>: is a string (between double quotes) consisting of two coordinates (letter and number).

The following example illustrates the use of this command.

Example 18

```
input mpchess
beginfig(0);
init_backboard;
draw backboard;
init_chessboard;
draw chessboard;
draw_circles(green)("e2","e7"
,"c5");
endfig;
```



5.4 Crosses

MPchess allows you to draw crosses on squares with the following command.

`draw_crosses(<color>)(<coord1>,<coord2>, etc.)`

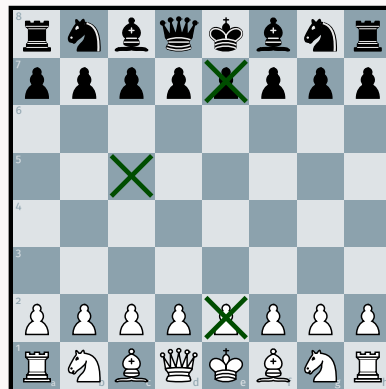
<color>: is a METAPOST `color`.

<coord1>: is a string (between double quotes) consisting of two coordinates (letter and number).

The following example illustrates the use of this command.

Example 19

```
input mpchess
beginfig(0);
init_backboard;
draw backboard;
init_chessboard;
draw chessboard;
draw_crosses(0.7[green,black
])( "e2", "e7", "c5");
endfig;
```



5.5 Move comments

MPchess allows you to display the classic move comments of the type “!?” with the following command.

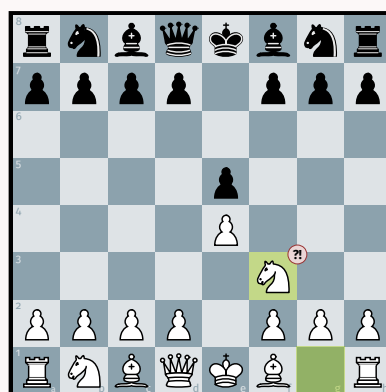
`draw_comment(<str>,<pos>)`

<str>: is a string (between double-quotes) to display.

<pos>: is a string (between double-quotes) consisting of a coordinate (letter and number).

Example 20

```
input mpchess;
string pgnstr;
pgnstr := "1. e4 e5 2. Nf3 Nc
        6 3. Nxe5 Nxe5 4. Bb5 c
        6";
build_chessboards_from_pgn(
    pgnstr);
beginfig(0);
init_backboard;
draw backboard;
show_last_move(3);
draw_chessboard_step(3); % Nf
3
draw_comment("?!", "f3");
endfig;
```



The color of the comment annotation can be changed with the following command following command.

`set_comment_color(<color>)`

6 Miscellaneous

6.1 Reset the **chessboard**

To reset the internal structure storing the positions of the parts, you can use the following command.

```
clear_chessboard
```

6.2 Global reset

To reinitialize the values of the different parameters of MPchess, you can use the following command.

```
reset_mpchess
```

6.3 Clip the board

We can clip the chessboard with the following command.

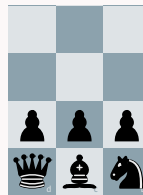
```
clip_chessboard(<string>)
```

<string>: is a string (between double quotes) composed of two coordinates (letter and number) separated by a dash, for example "a1-c6".

Here is an example of an illustration.

Exemple 21

```
input mpchess;  
string pgnstr;  
pgnstr := "1. e4 e5 2. Nf3 Nc  
6 3. Nxe5 Nxe5 4. Bb5 c  
6";  
build_chessboards_from_pgn(  
    pgnstr);  
beginfig(0);  
set_black_view;  
init_backboard;  
draw backboard;  
show_last_move(3);  
draw chessboard_step(3); % Nf  
3  
draw_comment("?!","f3");  
clip_chessboard("e1-g4");  
endfig;
```



7 To do

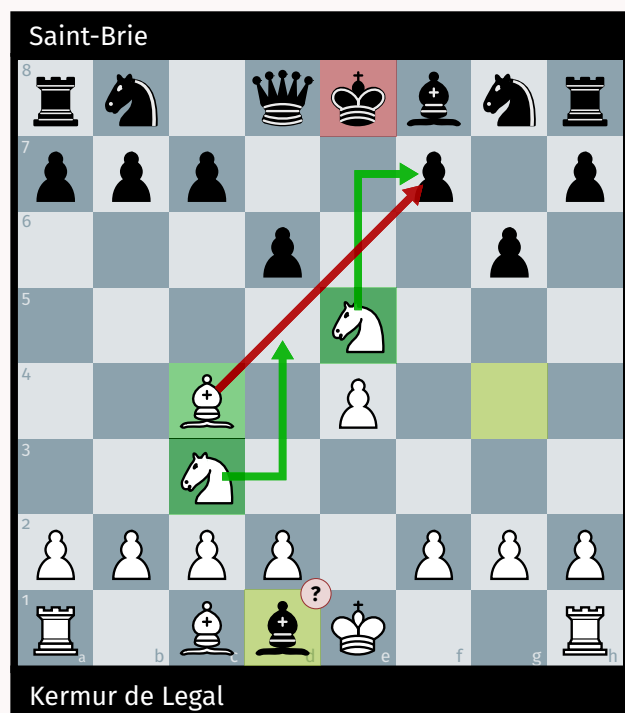
Many things can be added to *MPchess*. Among these, we can think of:

- display the captured pieces, or the differential of the captured pieces;
- afficher le temps restant pour chaque joueur ;
- show the accessible squares for a chosen piece (the Lichess points);
- display the n arrows indicating the n moves of the first lines of a position (with a decreasing thickness of the arrows);
- adding the coordinates outside the board when it is clipped;
- add piece themes.

8 Complete example

Exemple 22

```
input mpchess
string pgnstr;
pgnstr:="1. e4 e5 2. Bc4 d6 3. Nf3 Bg4 4. Nc3 g6 5. Nxe5 Bxd1";
build_chessboards_from_pgn(pgnstr);
beginfig(0);
set_white_player("Kermur de Legal");
set_black_player("Saint-Brie");
set_backboard_width(8cm);
init_backboard;
draw backboard;
show_last_move(10);
draw_comment("?", "d1");
color_square(0.3[green,black])("c4","c3","e5");
color_square(0.3[red,black])("e8");
draw_chessboard_step(10);
draw_arrows(0.3[green,black])("e5|-f7","c3-|d5");
draw_arrows(0.3[red,black])("c4--f7");
endfig;
```



References

- [1] Ulrike Fischer. *The chessboard package. Print chess boards.* Version 1.9. Mar. 9, 2023. URL: <https://ctan.org/pkg/chessboard>.
- [2] Ulrike Fischer. *The xskak package. An extension to the skak package for chess typesetting.* Version 1.5. Mar. 9, 2023. URL: <https://ctan.org/pkg/xskak>.
- [3] Hans Hagen et al. *The luamplib package. Use LuaTeX's built-in MetaPost interpreter.* Version 2.23.0. Jan. 12, 2022. URL: <https://ctan.org/pkg/luamplib>.
- [4] The MetaPost Team and John Hobby. *The metapost package. A development of Metafont for creating graphics.* Aug. 26, 2021. URL: <https://ctan.org/pkg/metapost>.

Command Index

add_black_pieces, 12
add_white_pieces, 12

build_chessboard_from_fen, 14
build_chessboards_from_pgn, 14

chessboard, 12
chessboard_step, 15
clear_areas, 13
clear_chessboard, 21
clear_files, 13
clear_ranks, 13
clear_squares, 13
clip_chessboard, 21
color_square, 18

draw_arrows, 16
draw_circles, 19
draw_comment, 20
draw_crosses, 19

get_backboard_size, 6
get_backboard_width, 5
get_halfmove_number, 16
get_square_dim, 6
get_totalmove_number, 16

init_backboard, 5

init_chessboard, 12

reset_mpchess, 21

set_arrow_width, 17
set_backboard_size, 6
set_backboard_width, 5
set_black_color, 7
set_black_player, 9
set_black_to_move, 11
set_black_view, 9
set_color_theme, 6
set_comment_color, 20
set_coords, 9
set_coords_font, 9
set_coords_inside, 8
set_coords_outside, 8
set_empty_chessboard, 12
set_last_move_color, 16
set_no_coords, 9
set_pieces_theme, 10
set_players_side, 10
set_white_color, 7
set_white_player, 9
set_white_to_move, 11
set_white_view, 9
set_whos_to_move, 11
show_last_move, 15

unset_whos_to_move, 11